

AGENCY NAME:	South Carolina Commission on Higher Education		
AGENCY CODE:	H03	SECTION:	011

Fiscal Year 2015-16 Accountability Report

SUBMISSION FORM

AGENCY MISSION	<p>MISSION: The South Carolina Commission on Higher Education (CHE) will promote quality and efficiency in the state system of higher education with the goal of fostering economic growth and human development in South Carolina.</p>
-----------------------	---

AGENCY VISION	<p><u>CHE Values</u></p> <ul style="list-style-type: none"> • the importance of quality higher education • the accessibility of this education to the citizens of the state • the accountability of the institutions to their students and the General Assembly • excellence on the part of its staff in performing its functions <p>excellence on the part of the institutions in providing educational opportunities</p>
----------------------	--

Please state yes or no if the agency has any major or minor (internal or external) recommendations that would allow the agency to operate more effectively and efficiently.

RESTRUCTURING RECOMMENDATIONS:	No
---	----

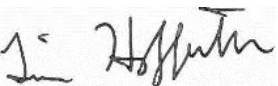
Please identify your agency's preferred contacts for this year's accountability report.

	<u>Name</u>	<u>Phone</u>	<u>Email</u>
PRIMARY CONTACT:	Gary S. Glenn	803-737-2155	gglenn@che.sc.gov
SECONDARY CONTACT:	Morgan O'Donnell	803-737-3921	modonnell@che.sc.gov

AGENCY NAME:	South Carolina Commission on Higher Education		
AGENCY CODE:	H03	SECTION:	011

I have reviewed and approved the enclosed FY 2015-16 Accountability Report, which is complete and accurate to the extent of my knowledge.

AGENCY DIRECTOR (SIGN AND DATE):			
	12-21-2016		
(TYPE/PRINT NAME):	Gary S. Glenn, Interim Executive Director		

BOARD/CMSN CHAIR (SIGN AND DATE):			
	12-21-2016		
(TYPE/PRINT NAME):	Tim M. Hofferth, Chair		

AGENCY NAME:	South Carolina Commission on Higher Education		
AGENCY CODE:	H03	SECTION:	011

AGENCY'S DISCUSSION AND ANALYSIS

The South Carolina Commission on Higher Education (CHE), established in 1967, serves as the coordinating board for SC's 33 public institutions of higher learning. It acts both as an oversight entity on behalf of the General Assembly and an advocate for the citizens of South Carolina as they seek the opportunity to improve their lives and those of their families through higher education. To accomplish this we look beyond the goals of individual institutions and focus on the overall needs of the state for the greater good; we provide timely, accurate, and relevant input and advice to the General Assembly; we work with SC's institutions of higher education and the business community to develop a comprehensive plan to positively position our state to face the challenges of a global economy; and we provide a layer of accountability, ensuring that our limited educational resources are being managed wisely and to alert the General Assembly of potential financial crises with our higher education system. The Commission is responsible for assuring a balance between student and taxpayer interests and institutional policies, aspirations, and needs; always focusing on our North Star: Access, Affordability, and Excellence

The major functions of CHE can be categorized broadly into four major areas: coordination and planning; research and information services; accountability and reporting; and program administration. In performing its responsibilities, CHE seeks to expand educational opportunities for all of the state's citizens, to invest in research for economic development and a better quality of life, and to increase cooperation and collaboration for higher levels of efficiency and quality.

CHE operates pursuant to the SC Code of Laws, as amended, §59-103-5, *et seq.*, and is governed by a board of 15 members who are appointed by the Governor pursuant to §59-103-10 including: four statewide at-large members with one appointed as chair; one member from each of the state's seven Congressional Districts; three members who serve as college and university trustees representing the public sectors of higher learning which include research institutions, four-year comprehensive teaching institutions, and technical colleges; and one member who serves as a president of an independent college representing the independent higher learning institutions. Appointees representing Congressional Districts are appointed by the Governor upon recommendation of a majority of the State Senators and House members comprising the District's legislative delegation. The remaining appointees are recommended and appointed based on the advice and consent of the Senate. Commissioners serve four-year terms with the exception of the institutional representatives who serve two-year terms. All members continue to serve until a replacement is named. All except the independent institution representative are voting members.

In brief, CHE provides statewide policy direction, management, and oversight of the state's higher education enterprise. In carrying out its responsibilities, CHE

- Oversees academic program quality including approval of academic programs at public institutions and licensing of non-public institutions that operate in SC;
- Maintains funding system and data/accountability systems essential for understanding performance and productivity that serve as the source of required state and national data;
- Approves all public higher education capital projects, leases, and land purchases, and collects and reports building data to help determine state capital priorities and maintenance needs;
- Provides administrative oversight and coordination of student financial aid to provide statewide equity of awards and consistency of selection criteria;

AGENCY NAME:	South Carolina Commission on Higher Education		
AGENCY CODE:	H03	SECTION:	011

- Supports increased access to and success in higher education, improving the transition from K-12 to higher education, ensuring effective transfer and articulation, promoting programs that are responsive to adult learners, veterans, and other non-traditional students; and
- Supports increased public awareness of the importance of higher education to help all South Carolinians earn a certificate or degree that prepares them to be successful, productive citizens in a changing global environment.

CHE conducts its business through the work of standing committees organized along the functional lines of CHE’s responsibilities. The standing committees include the Committee on Academic Affairs and Licensing (CAAL), Finance and Facilities, Student Services and Access and Equity, and Governmental and Administrative Affairs. CHE’s chair, vice chair, and committee chairs make up the Executive Committee. Standing committees bring recommendations forward to the full Commission for consideration. The work of the standing committees is supported by CHE staff. An Executive Director oversees daily operations of CHE and its supporting staff. CHE staff is organized in divisions (Academic Affairs, Student Affairs, Fiscal Affairs, and External Affairs) that provide support for the committees. Work of the divisions is also informed on a regular basis by formal and informal advisory committees comprised of institutional representatives and other appropriate stakeholders. The Executive Director and division directors make up the staff’s Executive Leadership Team. CHE continues to serve as the fiscal agent for PASCAL and also provides staff support, as required by statute, for the SmartState® (the Research Centers of Economic Excellence) Program Review Board.

The full Commission meets regularly throughout the year, typically on the first Thursday of the month. During the year, CHE strives to hold one or two of the business meetings offsite at an institution. The meeting schedule of the Commission, as well as those of the standing committees, are posted online, and meeting agendas and materials are typically posted one week in advance of meetings.

During FY 2015-16, the role of CHE was the subject of an extensive review by members of House Education and Public Works Committee – Higher Education Governance ad hoc Committee. To inform the Committee, CHE engaged in an intense study and review of our statutory authority and obligations, an analysis of our budgetary needs, and the development of new internal policies. Through these actions, we sought to provide clarity, to identify best practices, and to ensure sustainability. To accomplish this, we collected all current statutes and provisos, classifying each one as coordination, commentary, or financial. Through staff analysis, we identified which organizational unit of CHE was specifically responsible for carrying the directed action, the status of CHE in accomplishing the action within our existing resources, and recommendations for deletion or modification. The resulting SWOT analysis (identifying Strengths, Weaknesses, Opportunities, and Threats) culminated in recommendations to the ad hoc committee and the drafting of H.4833 to keep, delete, or amend the statutes and provisos currently in place to define our responsibilities as identified by the General Assembly. After meetings with experts from around the country, the presidents of our public institutions, and CHE commissioners and staff, the House Education and Public Works – Higher Education ad hoc Committee adjourned debate on H.4833 on April 14, 2016, stating that the existing statutes and provisos provided adequate guidance and authority, while acknowledging that CHE was not adequately resourced to support each of the existing mandates.

Every conversation, every consideration, and every action taken by CHE following our SWOT analysis is focused on our North Star: Access, Affordability, and Excellence. These three words represent our values, our promise, and our strategic agenda.

Risk Assessment and Mitigation Strategies:

AGENCY NAME:	South Carolina Commission on Higher Education		
AGENCY CODE:	H03	SECTION:	011

Our SWOT analysis identified 164 unique directives. Of these, 105 were assessed as “Green” – those where our existing resources allowed us to fully address the directive, 25 were assessed as “Yellow” – those where our existing resources allowed us to partially fulfill the directive, and 36 were assessed as “Red” – those where our existing resources did not permit us to address the directive or where the directive was no longer valid. Of the directives identified as not being fully met or not addressed at all or no longer valid, we identified 21 that could be deleted and 26 that could be amended (clarified). The remaining 14 were determined to be valid as written but could not be resourced within our existing budget.

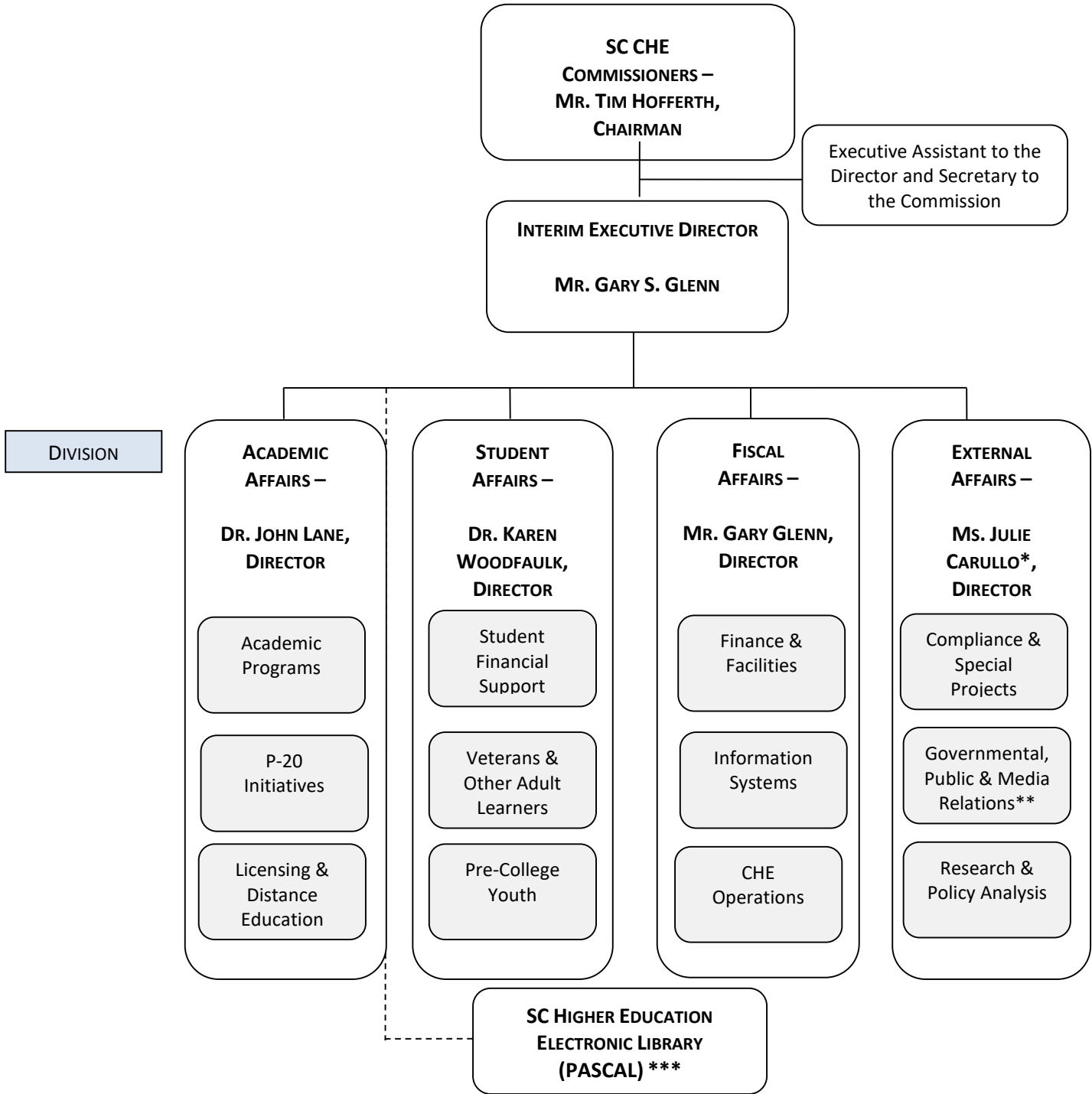
The above analysis was used to inform the General Assembly of the resources needed to “turn all Yellows and Reds to Green”. This request was not considered favorably and only a portion (\$300,000 out of the required \$2,167,700 requested for core mission support) was provided. The Commission will continue to request recurring support to fund our legislatively directed recurring mandates.

Restructuring Recommendations:

CHE provided myriad restructuring recommendations related to deletion or modification of existing statutes and provisos needed to provide clarity, best practices, and sustainability. These recommendations were summarized by legislative counsel to provide specifics needed to populate H.4833. The recommendations can be accessed [here](#).

AGENCY NAME:	South Carolina Commission on Higher Education		
AGENCY CODE:	H03	SECTION:	011

SC COMMISSION ON HIGHER EDUCATION, STAFFING ORGANIZATION



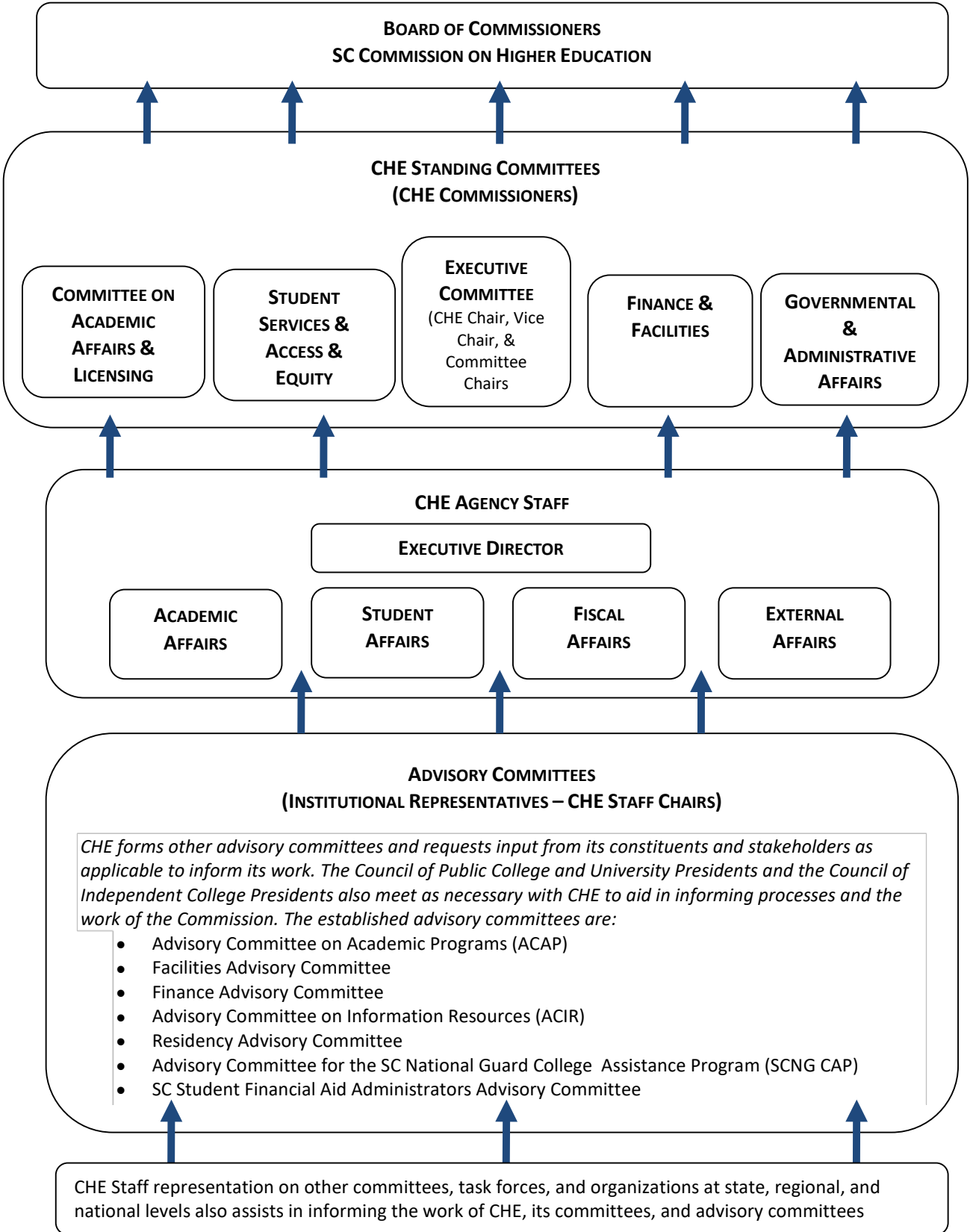
*Position vacant as of July 30, 2016.

** Areas have not yet been staffed and consideration is in process.

***CHE serves as the fiscal agent for PASCAL, a consortium of public and independent higher education academic libraries

AGENCY NAME:	South Carolina Commission on Higher Education		
AGENCY CODE:	H03	SECTION:	011

SC COMMISSION ON HIGHER EDUCATION, COMMISSION AND COMMITTEE STRUCTURE



Agency Name: Commission on Higher Education

Fiscal Year 2016-17
Accountability Report

Agency Code: H030 Section: 11

Strategic Planning Template

Type	Goal	Item # Strat	Object	Associated Enterprise Objective	Description
G	1			Education, Training, and Human Development	Promote <u>Quality and Effectiveness</u> of South Carolina's Higher Education System
S		1.1			Improve Monitoring and Assessment of Academic Programs and Student Services at SC
O			1.1.1		Establish performance metrics and outcome measures for assessment of programs
O			1.1.2		Redirect CHE staffing and resources to focus on performance metrics of academic
O			1.1.3		Determine options for re-visioning of the Governor's Professor-of-the-Year program
O			1.1.4		Conduct risk assessments of data security vulnerabilities
O			1.1.5		Conduct periodic institutional audits of state scholarship and student aid programs
S		1.2			Strengthen Monitoring and Assessment of Non-Public Postsecondary Institutions Operating
O			1.2.1		Establish performance metrics and outcome measures for assessment of programs at
O			1.2.2		Redirect CHE staffing and resources to focus on performance metrics of programs at
O			1.2.3		Improve functional collaboration between CHE's State Approving Agency (veterans' benefit programs) and Academic Affairs and Licensing Division
O			1.2.4		Provide for the efficient and effective management of licensing of non-public postsecondary education programs and responsibilities as the State Approving Agency
G	2			Education, Training, and Human Development	Improve <u>Affordability and Accessibility</u> of South Carolina Higher Education Programs and Services
S		2.1			Strengthen Existing and/or Develop New Funding Models to Sustain Public Higher Education
O			2.1.1		Engage the legislatively mandated Efficiency Studies Review Committee in seeking
O			2.1.2		Seek state appropriations to encourage funding innovations by institutions that
O			2.1.3		Seek executive, legislative, and institutional support for adherence to statutory
O			2.1.4		Seek executive, legislative, and institutional support for a bond bill or infrastructure
O			2.1.5		Re-evaluate CHE's membership in the South Carolina Higher Education Foundation
O			2.1.6		Provide for the efficient and effective management of student financial aid and other
S		2.2			Align SC's Higher Education Resources to Meet Current and Future Needs of the State Most
O			2.2.1		Initiate a study of SC's higher education resources with recommendations to identify
O			2.2.2		Investigate the need to revise statutory sector definitions for SC's public colleges and
O			2.2.3		Work with partner agencies and organizations to integrate workforce needs
O			2.2.4		[See also Item 2.1.1--Efficiency Studies]
G	3			Education, Training, and Human Development	Foster <u>Collaboration</u> to Strengthen Higher Education's Value to the State's Economic Growth and Human Development
S		3.1			Improve Collaboration among All Tiers of the State's Education Enterprise from Pre-K
O			3.1.1		Work through the Council of P-20 Agency Heads to coordinate key objectives of
O			3.1.2		Continue to strengthen communications between CHE and SDE/SBE at board,
O			3.1.3		Work with SDE to align new K-12 college readiness standards with institutional

Agency Name: Commission on Higher Education

Fiscal Year 2016-17
Accountability Report

Agency Code: H030 Section: 11

Strategic Planning Template

Type	Goal	Item # Strat	Object	Associated Enterprise Objective	Description
O			3.1.4		Work with SDE to develop college-ready remediation strategies prior to high school
O			3.1.5		Coordinate forums to provide continuing education opportunities for institutional
O			3.1.6		Provide for the efficient and effective management for programs under CHE's purview

Agency Name: Commission on Higher Education

Fiscal Year 2015-16
Accountability Report

Agency Code: H030 Section: 011

Performance Measurement Template

Item	Performance Measure	Target Value	Actual Value	Future Target Value	Time Applicable	Data Source and Availability	Calculation Method	Associated Objective(s)
------	---------------------	--------------	--------------	---------------------	-----------------	------------------------------	--------------------	-------------------------

NOTE: CHE recently engaged in new strategic planning and specific metrics have not yet been identified to more directly support the identified strategic objectives in support of planning priorities.

Scholarship and Grant Programs

1	Palmetto Fellows (PF), # Student Awards	7,107	7,357		Annual, Academic Year	CHE Annual Disbursement Report, CHEMIS Data	Data collected each semester during academic year	Number of awards made, unduplicated	2.1.6
2	Palmetto Fellows (PF), Dollars Awarded	\$57,281,704	\$58,944,397		Annual, Academic Year	CHE Annual Disbursement Report, CHEMIS Data	Data collected each semester during academic year	Number of dollars awarded, unduplicated	2.1.6
3	LIFE, # Student Awards	37,267	38,616		Annual, Academic Year	See PF Awards above	See PF Awards above	See PF Awards above	2.1.6
4	LIFE, Dollars Awarded	\$186,439,553	\$193,201,331		Annual, Academic Year	See PF Dollars Awarded above	See PF Dollars Awarded above	See PF Dollars Awarded above	2.1.6
5	HOPE, # Student Awards	3,456	3,666		Annual, Academic Year	See PF Awards above	See PF Awards above	See PF Awards above	2.1.6
6	HOPE, Dollars Awarded	\$8,908,908	\$9,435,787		Annual, Academic Year	See PF Dollars Awarded above	See PF Dollars Awarded above	See PF Dollars Awarded above	2.1.6
7	Need-Based Grants, # Student Awards	30,652	29,964		Annual, Academic Year	See PF Awards above	See PF Awards above	See PF Awards above	2.1.6
8	Need-Based Grants, Dollars Awarded	\$27,083,705	\$28,218,382		Annual, Academic Year	See PF Dollars Awarded above	See PF Dollars Awarded above	See PF Dollars Awarded above	2.1.6
9	Lottery Tuition Assistance, # Student Awards	41,585	41,528		Annual, Academic Year	See PF Awards above	See PF Awards above	See PF Awards above	2.1.6
10	Lottery Tuition Assistance, Dollars Awarded	\$50,664,330	\$53,222,468		Annual, Academic Year	See PF Dollars Awarded above	See PF Dollars Awarded above	See PF Dollars Awarded above	2.1.6
11	National Guard College Assistance Program, # Student Awards	803	854		Annual, Academic Year	CHEMIS program data collection	Data collected each semester during academic year	Number of awards made, unduplicated	2.1.6
12	National Guard College Assistance Program, Dollars Awarded	\$3,054,886	\$3,208,661		Annual, Academic Year	CHEMIS program data collection	Data collected each semester during academic year	Number of dollars awarded, unduplicated	2.1.6
13	# of Events in which staff participated to provide scholarship and grant programs updates to students, parents, and guidance counselors and to increase awareness	32	21		Fiscal Year	CHE Program Data, Staff Report	Tracked throughout the year	Number	2.1.6
14	Workshops hosted for financial aid representatives to review regulations and program changes to ensure proper administration	6	7		Fiscal Year	CHE Program Data, Staff Report	Tracked throughout the year	Number	2.1.6
15	Number of student scholarship/grant appeals processed for which decisions were rendered	163	192		Fiscal Year	CHE Program Data, Staff Report	Tracked throughout the year	Number	2.1.6

Students participating in SREB programs

16	SREB School of Arts Student Participation (new and continuing) N/A - Participation Ended	0	0	Academic Year	CHE participant information	Annual review, data collected as enrolled	Number of new and continuing participants	2.1.6
17	SREB Contract Programs for Veterinary Medicine and Optometry (new and continuing)	128	121	Academic Year	CHE participant information	Annual review, data collected as enrolled	Number of new and continuing participants	2.1.6
18	SREB Academic Common Market Participation	88	128	Calendar Year	Annually. CHE program report	Annual review, data collected as enrolled	Number of new and continuing SC students certified for participation	2.1.6
19	Doctoral Scholar Participants (new and continuing)	12	12	Academic Year	CHE participant information	Annual review, data collected as enrolled	Number of new and continuing participants	2.1.6
<i>Institutional Program Licensing Activity</i>								
20	Licensing - Agent Permits	283	246	Fiscal Year	CHE Program Data, Staff Report	Tracked throughout the year	Number	1.1.4
21	Licensing - Transcripts Requested	189	101	Fiscal Year	CHE Program Data, Staff Report	Tracked throughout the year	Number	1.1.4
22	Licensing - New Degree Granting Licenses, Initial	0	1	Fiscal Year	CHE Program Data, Staff Report	Tracked throughout the year	Number	1.1.4
23	Licensing - Degree Granting Licenses, Amendments to Existing Licenses	1	1	Fiscal Year	CHE Program Data, Staff Report	Tracked throughout the year	Number	1.1.4
24	Licensing - Initial Non-degree licenses	12	7	Fiscal Year	CHE Program Data, Staff Report	Tracked throughout the year	Number	1.1.4
25	Licensing - Total Licenses Issued	219	211	Fiscal Year	CHE Program Data, Staff Report	Tracked throughout the year	Number	1.1.4
26	Licensing - Licenses Relinquished, Deferred, Denied, or Revoked	13	15	Fiscal Year	CHE Program Data, Staff Report	Tracked throughout the year	Number	1.1.4
27	Licensing - Student Complaints	55	45	Fiscal Year	CHE Program Data, Staff Report	Tracked throughout the year	Number	1.1.4
<i>Veterans Education and Training Programs</i>								
28	SAA - Number of program approvals for degree, diploma, and certificate programs at each school approved for veterans benefits	1,383	3,519	Federal Fiscal Year (Oct 1-Sept 30, FY15 & FY16)	CHE Program Data, Staff Report	Tracked throughout the year	Number	1.1.4
29	SAA - OJT Apprenticeships and Training: Number of Business Organizations across SC involved	50	68	Federal Fiscal Year (Oct 1-Sept 30, FY15 & FY16)	CHE Program Data, Staff Report	Tracked throughout the year	Number	1.1.4
30	SAA - OJT Apprenticeships and Training: Number of Veterans enrolled in career and training programs	179	195	Federal Fiscal Year (Oct 1-Sept 30, FY15 & FY16)	CHE Program Data, Staff Report	Tracked throughout the year	Number	1.1.4
31	SAA - OJT Apprenticeships and Training: Number of Approved Career Training Objectives (i.e., types of available jobs)	192	204	Federal Fiscal Year (Oct 1-Sept 30, FY15 & FY16)	CHE Program Data, Staff Report	Tracked throughout the year	Number	1.1.4
32	SAA - OJT Apprenticeships and Training: Number of the types of career training objectives in which veterans participated.	16	36	Federal Fiscal Year (Oct 1-Sept 30, FY15 & FY16)	CHE Program Data, Staff Report	Tracked throughout the year	Number	1.1.4

CHE Academic Program Approval								
33	Academic Program Approval & Review - New Proposals Reviewed	26	26	Fiscal Year	CHE Program Data, Staff Report	Tracked throughout the year	Number	1.1
34	Academic Program Approval & Review - Existing Programs Terminated by Institutions	61	50	Fiscal Year	CHE Program Data, Staff Report	Tracked throughout the year	Number	1.1
35	Academic Program Approval & Review - Program Modifications Reviewed	38	108	Fiscal Year	CHE Program Data, Staff Report	Tracked throughout the year	Number	1.1
36	Academic Program Approval & Review - Existing Centers Terminated by Institutions	1	12	Fiscal Year	CHE Program Data, Staff Report	Tracked throughout the year	Number	1.1
37	Academic Program Approval & Review - Number of Notification Changes	85	70	Fiscal Year	CHE Program Data, Staff Report	Tracked throughout the year	Number	1.1
CHE Capital Project Approval								
38	Comprehensive Permanent Improvement Projects Approved, # of Projects	23	13	Fiscal Year	CHE Program Data, Staff Report	Tracked throughout the year	Number	2.1.4
39	Comprehensive Permanent Improvement Projects Approved, Dollar Value of Projects	\$153,566,889	\$49,170,000	Fiscal Year	CHE Program Data, Staff Report	Tracked throughout the year	Number	2.1.4
40	Comprehensive Permanent Improvement Projects Deferred or Returned, # of Projects	N/A	12	Fiscal Year	CHE Program Data, Staff Report	Tracked throughout the year	Number	2.1.4
41	Comprehensive Permanent Improvement Projects Deferred or Returned, Dollar Value of Projects	N/A	\$113,415,000	Fiscal Year	CHE Program Data, Staff Report	Tracked throughout the year	Number	2.1.4
42	Capital Projects Advanced, New Construction, # of Projects	20	20	Fiscal Year	CHE Program Data, Staff Report	Tracked throughout the year	Number	2.1.4
43	Capital Projects Advanced, New Construction, Dollar Value of Projects	\$57,472,256	\$211,415,064	Fiscal Year	CHE Program Data, Staff Report	Tracked throughout the year	Number	2.1.4
44	Capital Projects Advanced, Land or Building Acquisitions, # of Projects	11	9	Fiscal Year	CHE Program Data, Staff Report	Tracked throughout the year	Number	2.1.4
45	Capital Projects Advanced, Land or Building Acquisitions, Dollar Value of Projects	\$112,479,000	\$10,095,016	Fiscal Year	CHE Program Data, Staff Report	Tracked throughout the year	Number	2.1.4
46	Capital Projects Advanced, Renovation/Renewal/Repurposing, # of Projects	52	51	Fiscal Year	CHE Program Data, Staff Report	Tracked throughout the year	Number	2.1.4
47	Capital Projects Advanced, Renovation/Renewal/Repurposing, Dollar Value of Projects	\$148,750,814	\$153,905,650	Fiscal Year	CHE Program Data, Staff Report	Tracked throughout the year	Number	2.1.4
48	Capital Projects Advanced, Budget/Scope Revisions, # of Projects	13	21	Fiscal Year	CHE Program Data, Staff Report	Tracked throughout the year	Number	2.1.4
49	Capital Projects Advanced, Budget/Scope Revisions, Dollar Value of Projects	\$35,991,324	\$364,506,162	Fiscal Year	CHE Program Data, Staff Report	Tracked throughout the year	Number	2.1.4
50	Leases Advanced, # of Leases	7	9	Fiscal Year	CHE Program Data, Staff Report	Tracked throughout the year	Number	2.1.4

51	Leases Advanced, Dollar Value of Leases	\$10,369,730	\$5,918,857		Fiscal Year	CHE Program Data, Staff Report	Tracked throughout the year	Number	2.1.4
52	Capital Projects Closed, # of Projects	62	42		Fiscal Year	CHE Program Data, Staff Report	Tracked throughout the year	Number	2.1.4
53	Capital Projects Closed, Dollar Value of Projects	\$425,806,573	\$336,255,699		Fiscal Year	CHE Program Data, Staff Report	Tracked throughout the year	Number	2.1.4
CHE Competitive Grant Programs for Public Institutions									
54	Improving Teacher Quality Awards	6	4		Fiscal Year	CHE Program Data, Staff Report	Tracked throughout the year	Number	3.1.6
55	Improving Teacher Quality Submissions	10	6		Fiscal Year	CHE Program Data, Staff Report	Tracked throughout the year	Number	3.1.6
56	EIA-Centers of Excellence Awards	5	5		Fiscal Year	CHE Program Data, Staff Report	Tracked throughout the year	Number (New & continuing awards. FY14: 1 new, 3 continuing)	3.1.6
57	EIA-Centers of Excellence Submissions (New Proposals & Continuing Requests)	8	7		Fiscal Year	CHE Program Data, Staff Report	Tracked throughout the year	Number	3.1.6
58	Service Learning Awards	3	3		Fiscal Year	CHE Program Data, Staff Report	Tracked throughout the year	Number	3.1.6
59	Service Learning Submissions	14	14		Fiscal Year	CHE Program Data, Staff Report	Tracked throughout the year	Number	3.1.6
SmartState Program									
60	SmartState Centers Awarded	51	51	n/a	Year-end as of June 30	CHE Program Data	last approved Centers in 2013	Total Centers awarded via the competitive process since FY03 with the last Centers awarded in FY 2012-13.	3.1.6
61	Lottery Funds Awarded for Approved Centers	\$197,600,000	\$197,600,000	n/a	Year-end as of June 30	CHE Program Data	last awards for Centers in 2013	Total lottery funds and program interest made available for awards since FY03	3.1.6
62	Lottery Funds Matched 1:1 and Drawn	\$197,600,000	\$197,600,000	\$197,600,000	Year-end as of June 30	CHE Program Data	Tracked throughout the year	State matching funds drawn upon certification of 1:1 non-state match	3.1.6
63	Percent of Funds Matched & Drawn	100.0%	100.0%	100%	Year-end as of June 30	CHE Program Data	Tracked throughout the year	Percentage Matched & Drawn / Available Dollars for Approved	3.1.6
64	Percent of Non-state Match Funds Pledged	100%	100%	100%	Year-end as of June 30	CHE Program Data	Tracked throughout the year	Percentage of Approved Lottery Funds for which the requisite 1:1 match is pledged	3.1.6
65	Endowed Chairs Created for Funded Centers	88	85		Year-end as of June 30	CHE Program Data	Tracked throughout the year	Total chairs identified for approved Centers.	3.1.6
66	Endowed Chairs Appointed	66	66	85	Year-end as of June 30	CHE Program Data	Tracked throughout the year	Total chairs appointed to date	3.1.6

67	Percent of Chairs Appointed	75%	78%	100%	Year-end as of June 30	CHE Program Data	Tracked throughout the year	Percentage Hired / Appointed Chairs	3.1.6
College Access and Awareness Programs									
68	College Goal Sunday - Participating families	719	923		Fiscal Year	CHE Program Data, Staff Report	Tracked throughout the year	Number	3.1.6
69	College Goal Sunday - FAFSAs completed	321	251		Fiscal Year	CHE Program Data, Staff Report	Tracked throughout the year	Number	3.1.6
70	College Goal Sunday - Participating volunteers	325	362		Fiscal Year	CHE Program Data, Staff Report	Tracked throughout the year	Number	3.1.6
71	College Application Month - Participating high schools	186	215		Fiscal Year	CHE Program Data, Staff Report	Tracked throughout the year	Number	3.1.6
72	College Application Month - Participating students	39,358	45,828		Fiscal Year	CHE Program Data, Staff Report	Tracked throughout the year	Number	3.1.6
73	College Application Month - Applications completed	59,184	32,090		Fiscal Year	CHE Program Data, Staff Report	Tracked throughout the year	Number	3.1.6
SC GEAR UP									
74	SC GEAR UP - Services to STUDENTS: # Receiving Tutoring and/or Academic Enrichment / Average # Hours of Service Per Student Receiving the Service Per Year	1,950 / 31.9	1,398 / 27.1		Federal Fiscal Year (Oct 1-Sept 30, FY15 & FY16)	CHE Program Data, Reports of GEAR UP Graduation Coaches.	Tracked throughout the year	Number / Average Hours per Participant	
75	SC GEAR UP - Services to STUDENTS: # Participating in Rigorous Academic Curricula / Average # Hours of Service Per Student Receiving the Service Per Year	803 / 135	1121 / 135		Federal Fiscal Year (Oct 1-Sept 30, FY15 & FY16)	CHE Program Data, Reports of GEAR UP Graduation Coaches.	Tracked throughout the year	Number / Average Hours per Participant	
76	SC GEAR UP - Services to STUDENTS: # Receiving Comprehensive Mentoring / Average # Hours of Service Per Student Receiving the Service Per Year	3,023 / 15.2	2,639 / 18.3		Federal Fiscal Year (Oct 1-Sept 30, FY15 & FY16)	CHE Program Data, Reports of GEAR UP Graduation Coaches.	Tracked throughout the year	Number / Average Hours per Participant	
77	SC GEAR UP - Services to STUDENTS: # Receiving Advising and/or Academic and Career Planning / Average # Hours of Service Per Student Receiving the Service Per Year	3,174 / 3.9	3,074 / 5.1		Federal Fiscal Year (Oct 1-Sept 30, FY15 & FY16)	CHE Program Data, Reports of GEAR UP Graduation Coaches.	Tracked throughout the year	Number / Average Hours per Participant	
78	SC GEAR UP - Services to STUDENTS: # Participating in College Visits/College Student Shadowing / Average # Hours of Service Per Student Receiving the Service Per Year	1,034 / 7.1	992 / 10.3		Federal Fiscal Year (Oct 1-Sept 30, FY15 & FY16)	CHE Program Data, Reports of GEAR UP Graduation Coaches.	Tracked throughout the year	Number / Average Hours per Participant	
79	SC GEAR UP - Services to STUDENTS: # Participating in Summer Programs / Average # Hours of Service Per Student Receiving the Service Per Year	185 / 2.6	419 / 6		Federal Fiscal Year (Oct 1-Sept 30, FY15 & FY16)	CHE Program Data, Reports of GEAR UP Graduation Coaches.	Tracked throughout the year	Number / Average Hours per Participant	

80	SC GEAR UP - Services to STUDENTS: # Receiving Financial Aid Counseling / Average # Hours of Service Per Student Receiving the Service Per Year	781 / 2.2	582 / 1.4	Federal Fiscal Year (Oct 1-Sept 30, FY15 & FY16)	CHE Program Data, Reports of GEAR UP Graduation Coaches.	Tracked throughout the year	Number / Average Hours per Participant
81	SC GEAR UP - Services to PARENTS: # Participating in Workshops on College Prep/Financial Aid / Average # Hours of Service Per Participant Receiving the Service Per Year	236 / 2.0	446 / 2.0	Federal Fiscal Year (Oct 1-Sept 30, FY15 & FY16)	CHE Program Data, Reports of GEAR UP Graduation Coaches.	Tracked throughout the year	Number / Average Hours per Participant
82	SC GEAR UP - Services to PARENTS: # Receiving Counseling and/or Advising / Average # Hours of Service Per Participant Receiving the Service Per Year	8,264 / 14.5	10,089 / 2.2	Federal Fiscal Year (Oct 1-Sept 30, FY15 & FY16)	CHE Program Data, Reports of GEAR UP Graduation Coaches.	Tracked throughout the year	Number / Average Hours per Participant

Agency Name: Commission on Higher Education

Fiscal Year 2015-16
Accountability Report

Agency Code: H030 Section: 011

Program Template

Program/Title	Purpose	FY 2015-16 Expenditures (Actual)				FY 2016-17 Expenditures (Projected)				Associated Objective(s)
		General	Other	Federal	TOTAL	General	Other	Federal	TOTAL	
1. Administration										
Administration	CHE's role is to promote access, affordability, and excellence in higher education. To this end, we review and approve new degree program proposals and evaluate existing programs; Approve all Permanent Improvement Projects (PIPs); Administer programs affecting SC higher education; Maintain a statewide planning and institutional effectiveness system; Examine and license non-public educational institutions; Collect data, conduct research, and report recommendations regarding policies, roles, operations, and structure of SC's higher education institutions; Maintain the CHE Management Information System (CHEMIS); Establish polices and procedures for the transferability of courses at the undergraduate level, remedial education, and admissions standards. (SC Code of Laws authorizing legislation 59-103-10 et seq. Regulations promulgated by the agency are included in Chapter 62 of the State Code of Regulations.)	\$ 1,938,220	\$ 390,292		\$ 2,328,512	\$ 2,360,440		\$ 2,360,440	1.1.1, 1.1.2, 1.1.3, 1.1.4, 1.1.5; 1.2.1, 1.2.2, 1.2.3, 1.2.4; 2.1.1, 2.1.2, 2.1.3, 2.1.4, 2.1.5, 2.1.6; 2.2.1, 2.2.2, 2.2.3, 2.2.4; 3.1.1, 3.1.2, 3.1.3, 3.1.4, 3.1.5, 3.1.6	

Agency Name: Commission on Higher Education

Fiscal Year 2015-16
Accountability Report

Agency Code: H030 Section: 011

Program Template

Program/Title	Purpose	FY 2015-16 Expenditures (Actual)				FY 2016-17 Expenditures (Projected)				Associated Objective(s)
		General	Other	Federal	TOTAL	General	Other	Federal	TOTAL	
II. Other Agencies & Entities - Special Items										
Greenville Technical College - University Center	The University Center of Greenville is a consortium of public and private colleges and universities offering degree programs to the citizens of the Upstate and surrounding areas. The program is described more fully below for the UCG Operations appropriation. UCG was originally located on the Greenville Technical College Campus and relocated to its current site when Greenville Technical College and the Greenville Tech Foundation purchased the neighboring McAlister Square Mall. State support for rent and operations flows through the CHE budget to UCG and Greenville Technical College.	\$ 594,390			\$ 594,390	\$ 594,390			\$ 594,390	Funds flow through to intended recipient. Related 2.2.1, 2.2.3, 3.1.6

Agency Name: Commission on Higher Education

Fiscal Year 2015-16
Accountability Report

Agency Code: H030 Section: 011

Program Template

Program/Title	Purpose	FY 2015-16 Expenditures (Actual)				FY 2016-17 Expenditures (Projected)				Associated Objective(s)
		General	Other	Federal	TOTAL	General	Other	Federal	TOTAL	
University Center of Greenville - Operations	The University Center of Greenville (UCG) consortium was established in 1987 to meet the need for 4-year public education in the Greenville Area. Institutions presently include: Clemson, SC State, USC Columbia, USC Upstate, Furman, Anderson, and Greenville Technica College. State support for rent and operations flows through CHE budget to UCG and Greenville Technical College. In the mid-1990s Clemson became the fiscal agent for UCG. UCG was developed to meet two challenges facing the surrounding Greenville metropolitan and county area - 1) provide a facility that gives access to public higher education for two-year colleges graduates who cannot leave Greenville County to pursue a four-year or graduate degree and 2) provide that same level of access to working professionals so that they are able to pursue Bachelor's, Master's and Doctoral degrees without having to disrupt their family lives and job responsibilities. UCG's website is www.ucgreenville.org.	\$ 1,334,899			\$ 1,334,899	\$ 1,084,899			\$ 1,084,899	Funds flow through to intended recipient. Related 2.2.1, 2.2.3, 3.1.6
Academic Endowment	The Academic Endowment Fund, created through 59-118-10, et seq, enacted in 1997, encourages public colleges to seek out private sector investments. The Endowment provides a modest match to those private sector monies raised by the public 2-year and 4-year colleges to expand on instructional enhancements. Ref: 59-118-10 et. seq.	\$ 160,592			\$ 160,592	\$ 160,592			\$ 160,592	Funds flow through to intended recipient. Related 2.1,2.2, 3.1.6

Agency Name: Commission on Higher Education

Fiscal Year 2015-16
Accountability Report

Agency Code: H030 Section: 011

Program Template

Program/Title	Purpose	FY 2015-16 Expenditures (Actual)				FY 2016-17 Expenditures (Projected)				Associated Objective(s)
		General	Other	Federal	TOTAL	General	Other	Federal	TOTAL	
EPSCOR	The Experimental Program to Stimulate Cooperative Research (EPSCoR) uses state funding to leverage federal grant funding from NASA, NSF, and NIH for scientific research at public institutions. Website: scepacoridea.org	\$ 161,314			\$ 161,314	\$ 161,314			\$ 161,314	Funds flow through to intended recipient. Related 2.2, 3.1.6
African American Loan Program	The African American Loan program supports minority teacher education at Benedict College and South Carolina State University. The budget proviso provides direct funding to the institutions and provides that CHE has monitoring and reporting responsibilities. Promulgated program regulations are found in the SC Code of Regulations, R.62.540 - R.62.590.	\$ 119,300			\$ 119,300	\$ 119,300			\$ 119,300	Funds flow through to intended recipient. 2.1.6
Performance Funding	Funds related to this CHE budget line were re-directed in the early to mid-2000s to provide funding for EPSCoR and also SC State University. In FY16, budget Proviso 11.7 directs 80% of the line item funding to EPSCoR and 20% to support the management education programs of the School of Business at SC State. The funds flow through CHE to the intended recipients.	\$ 1,397,520			\$ 1,397,520	\$ 1,397,520			\$ 1,397,520	Funds flow through to intended recipient. Related 2.2, 3.1.6

Agency Name: Commission on Higher Education

Fiscal Year 2015-16
Accountability Report

Agency Code: H030 Section: 011

Program Template

Program/Title	Purpose	FY 2015-16 Expenditures (Actual)				FY 2016-17 Expenditures (Projected)				Associated Objective(s)
		General	Other	Federal	TOTAL	General	Other	Federal	TOTAL	
State Electronic Library	The Statewide Electronic Library, known as PASCAL, is a cooperative and collaborative effort among our public and private higher education libraries that is transforming how our state's citizens access vital academic information. It connects SC's 58 public and independent (private) higher education libraries to enable an enhanced and more cost-effective means of sharing academic collections statewide. Through SC's Higher Education Libraries, 250,000+ post-secondary students, faculty, and researchers will benefit from expanded access to sophisticated academic resources. Others in the state will benefit by gaining access to the higher education academic resources through the State Library or via "Walk-In" use of academic libraries. The program helps the State avoid duplicated expenditures by enabling a mechanism for group purchases of essential sophisticated electronic academic databases that will be available to all of SC's higher education libraries. Program website: www.pascalsc.org .	\$ 164,289	\$ 2,441,688		\$ 2,605,977	\$ 164,289	\$ 4,599,091		\$ 4,763,380	Funds flow through to PASCAL. CHE serves as fiscal agent. 2.1, 3.1.6

Agency Name: Commission on Higher Education

Fiscal Year 2015-16
Accountability Report

Agency Code: H030 Section: 011

Program Template

Program/Title	Purpose	FY 2015-16 Expenditures (Actual)				FY 2016-17 Expenditures (Projected)				Associated Objective(s)
		General	Other	Federal	TOTAL	General	Other	Federal	TOTAL	
III. Licensing										
Licensing	The Commission is the sole authority for licensing nonpublic educational institutions established in South Carolina and for those established elsewhere which want to operate in or confer degrees in this State. SC Code of Laws 59-58-10 et seq and SC Code of Regulations, R.62.1-R.62.100	\$ 47,775	\$ 249,466		\$ 297,241	\$ 47,972	\$ 306,327		\$ 354,299	1.2.1, 1.2.2, 1.2.3, 1.2.4
IV. State Approving Section										
State Approving Section	The Veterans Education & Training Section functions as the State Approving Agency (SAA). SAA's focus is the review, audit, evaluation, and approval of quality programs under state and federal criteria where veterans may use their education benefits. Approval may be granted for private for-profit degree-granting colleges & universities; professional/vocational certificate or diploma granting institutions (non-college degree); On-the-Job-Training establishments (6 - 24 mos training programs); non-registered apprenticeship establishments (more than 24 mos and annual related training); and flight training schools (for pilot licenses and aviation employment), and licensing and certificates testing. Upon approval, SAA provides oversight by conducting on-site compliance survey visits and when deemed necessary, technical assistance visits.			\$ 228,291	\$ 228,291			\$ 316,217	\$ 316,217	1.2.3, 1.2.6
V. CHE Grant & Other Higher Education Collaborations - Special Items										

Agency Name: Commission on Higher Education

Fiscal Year 2015-16
Accountability Report

Agency Code: H030 Section: 011

Program Template

Program/Title	Purpose	FY 2015-16 Expenditures (Actual)				FY 2016-17 Expenditures (Projected)				Associated Objective(s)
		General	Other	Federal	TOTAL	General	Other	Federal	TOTAL	
EEDA	The Education and Economic Development Act of 2005 (EEDA) required a career cluster model be developed in secondary education in order to promote pathways to success for the state's students. As part of the initiative, CHE and the public institutions of higher learning were directed to work with state education partners in ensuring seamless pathways from high school to college and to support activities related to workforce promotion. The funding supports staff work on alignment issues and related projects developed during the implementation of the legislation including the electronic (on-line) SC Transfer and Articulation System (www.SCTRAC.org) for public colleges and the SC Course Alignment Project which brings together high school and college professors to work on alignment of related ending high school courses and beginning college courses.	\$ 931,999			\$ 931,999	\$ 1,440,518			\$ 1,440,518	1.1, 2.2, 3.1.3, 3.1.6
Improving Teacher Quality (ITQ)	The federal Improving Teacher Quality (ITQ) grant program was enacted as Title II of the No Child Left Behind Act to provide funds to local education agencies, higher education institutions, and nonprofit organizations to: conduct professional development activities in core academic subjects to ensure that teachers, highly qualified paraprofessionals and principals have subject matter knowledge in the academic subjects they teach, including computer-related technology to enhance instruction. Ref: 59-103-140, 59-26-20			\$ 403,169	\$ 403,169			\$ 885,856	\$ 885,856	3.1.6

Agency Name: Commission on Higher Education

Fiscal Year 2015-16
Accountability Report

Agency Code: H030 Section: 011

Program Template

Program/Title	Purpose	FY 2015-16 Expenditures (Actual)				FY 2016-17 Expenditures (Projected)				Associated Objective(s)
		General	Other	Federal	TOTAL	General	Other	Federal	TOTAL	
GEAR UP	Gaining Early Awareness and Readiness for Undergraduate Programs (GEAR UP) is a federal discretionary program to significantly increase the number of low-income students who are prepared to enter and succeed in postsecondary education. The US Department of Education (USED) awards federal funds for state and local partnership grants through a competitive grant process. CHE is designated by the Governor as the lead state agency to apply for and administer the grant. CHE is presently managing its 3rd GEAR UP grant which was awarded in September 2011 and provides \$22.3 million over 7 years. SC GEAR UP serves 7th grade students in middle schools along the state's I-95 corridor providing services in a cohort-based approach through the freshman year in college. The program seeks to increase academic readiness for secondary and postsecondary challenges.	\$ 177,201		\$ 3,137,649	\$ 3,314,850	\$ 177,201		\$ 3,527,759	\$ 3,704,960	3.1.6
College Goal Sunday	In 2012 CHE was granted and received a one-year award from USA Funds to implement College Goal Sunday. The program aims to increase the number of college-bound students completing the "Free Application for Federal Student Aid" (FAFSA). The grant has continued and the program has grown from an initial pilot along the I-95 corridor to a statewide program.		\$ -		\$ -	\$ 41,000			\$ 41,000	3.1.6

Agency Name:

Commission on Higher Education

Fiscal Year 2015-16
Accountability Report

Agency Code:

H030

Section:

011

Program Template

Program/Title	Purpose	FY 2015-16 Expenditures (Actual)				FY 2016-17 Expenditures (Projected)				Associated Objective(s)
		General	Other	Federal	TOTAL	General	Other	Federal	TOTAL	
SmartState Program Administration (Note: Program expenditures shown here reflect administration and also include for approved Centers the state matching funds authorized during the fiscal year by the Other Funds Oversight Committee for drawdown upon confirmation of the requisite 1:1 non-state match.)	In 2002, the General Assembly established a competitive grants program, the SC Centers of Economic Excellence Program, now known as SmartState, to award to South Carolina's three research universities funds for endowed professorships in areas that will enhance economic opportunities for the state's citizens. SmartState is overseen by the Research Centers of Excellence Review Board with staff and support for the Board provided by CHE. The program has been funded through lottery revenues which are held in trust for the program to be matched on a dollar-for-dollar basis with non-state funds to carry out the purpose of the program. No new funding has been provided since FY09. The other funds here provide for program administration at CHE and the institutions. For more information about SmartState, www.smartstatesc.org. SC Code of Laws 2-75-05 et. seq.		\$ 2,888,478		\$ 2,888,478		\$ 885,284		\$ 885,284	2.1, 2.2, 3.1.6
VI. Employee Benefits										
Employee Benefits	State Employer Contribution (Employee Benefits) consist of payments made on behalf of employees for retirement, social security, worker's compensation & unemployment insurance, health and dental insurance, and pre-death retirement benefits. Other fund and federal fund employee benefits are charged directly to the program supported.	\$ 348,583			\$ 348,583	\$ 560,673			\$ 560,673	N/A
VII. Scholarships and Assistance - Special Items										

Agency Name: Commission on Higher Education

Fiscal Year 2015-16
Accountability Report

Agency Code: H030 Section: 011

Program Template

Program/Title	Purpose	FY 2015-16 Expenditures (Actual)				FY 2016-17 Expenditures (Projected)				Associated Objective(s)
		General	Other	Federal	TOTAL	General	Other	Federal	TOTAL	
South Carolina National Guard College Access Program (SCNG CAP)	South Carolina National Guard (SCNG CAP) provides financial incentives for enlisting in the Army or Air National Guard in areas of critical need. Effective with the passage of Act 40 of 2007, SCNG CAP replaced a former loan repayment program fo SCNG CAP members which ended and phased-out. In accordance with the program's authorizing legislation, CHE administers the program in coordination with the SC NG. The program regulations provide for eligibility/commitment requirements for qualifying for tuition benefits, limitations on the amount of tuition assistance, and qualifications for successful program participation in relation to SC NG. SC Code of Laws 59-114-10 et seq. and SC Regulation, R.62.250-R.62.263.	\$ 89,968	\$ 3,314,927		\$ 3,404,895	\$ 89,968	\$ 4,545,000		\$ 4,634,968	2.1.6, 1.1.5

Agency Name: Commission on Higher Education

Fiscal Year 2015-16
Accountability Report

Agency Code: H030 Section: 011

Program Template

Program/Title	Purpose	FY 2015-16 Expenditures (Actual)				FY 2016-17 Expenditures (Projected)				Associated Objective(s)
		General	Other	Federal	TOTAL	General	Other	Federal	TOTAL	
SREB Contract Program & Assessments	The Southern Regional Education Board (SREB) was founded in 1948 by Governors of member states to help states improve and share resources in higher education. Today, SREB continues to organize and administer regional arrangements to avoid costly duplication and expensive development of new programs such as the voluntary Academic Common Market program. SREB data collection, policy documents, comparative research and publications on K-20 issues, as well as participation in other programs are benefits of SC's membership in this 16 state consortium. SREB operates through state support provided by member states. Each year, Governors of member states receive an invoice for their share of SREB general operations and regional education programs of the SREB and contracts-for-services. CHE coordinates SC's participation in higher education programs. SREB contract programs offer students pursuing professional health degrees admission to schools in other states for the price of in-state tuition and fees or reduced tuition at private institutions. Participating states pay schools to maintain slots in their professional programs and save the expense of building and staffing these schools. SC	\$ 3,740,103			\$ 3,740,103	\$ 3,993,994			\$ 3,993,994	2.1.6, 1.1.5, 3.1.6
Educational Endowment	Funds provided for the educational endowment are directed for higher education to be halved between the Palmetto Fellows Scholarships and Need-based Grants. Additional funding for these programs is provided through the Education Lottery. SC Code of Laws 59-140-30 and 48-46-40(F).	\$ 24,000,000			\$ 24,000,000	\$ 24,000,000			\$ 24,000,000	By statute, funds are divided equally in support of Palmetto Fellows Scholarships and Need-Based Grants. See the related programs.

Agency Name: Commission on Higher Education

Fiscal Year 2015-16
Accountability Report

Agency Code: H030 Section: 011

Program Template

Program/Title	Purpose	FY 2015-16 Expenditures (Actual)				FY 2016-17 Expenditures (Projected)				Associated Objective(s)
		General	Other	Federal	TOTAL	General	Other	Federal	TOTAL	
Need Based Grants	In 2008, the General Assembly provided funds to a nonprofit organization dedicated to expanding education, employment and independent living opportunities for postsecondary programs to support individuals with intellectual disabilities such as significant learning, cognitive or developmental disabilities. The programs provide the opportunity for these students to learn social, academic and vocational skills needed to be successfully employed and live independently. These funds are now included as need-based grant funds dedicated to students in identified transition programs. Presently, the recognized programs include Clemson, Coastal Carolina, College of Charleston, USC, and Winthrop.	\$ 179,178			\$ 179,178	\$ 350,000			\$ 350,000	2.1.6, 1.1.5. For other funding received, see also Education Endowment. See also Charleston Transition Connection above. Expenditures reported here reflect the transferred funds for this program.

Other Programs not listed in CHE Part 1A - EIA-funded programs and Lottery-funded programs that flow through CHE

Agency Name: Commission on Higher Education

Fiscal Year 2015-16
Accountability Report

Agency Code: H030 Section: 011

Program Template

Program/Title	Purpose	FY 2015-16 Expenditures (Actual)				FY 2016-17 Expenditures (Projected)				Associated Objective(s)
		General	Other	Federal	TOTAL	General	Other	Federal	TOTAL	
EIA-Funded Centers of Excellence	The purpose of the EIA - Centers of Excellence competitive grant program is to enable eligible institutions or groupings of institutions, to serve as "state-of-the-art" resource centers for South Carolina in a specific area related to the improvement of teacher education. Teacher education encompasses both in-service and pre-service training. These "resource centers" develop and model state-of-the-art teaching practices, conduct research, disseminate information and provide training for K-12 and higher education personnel in the Center's specific area of expertise. In 2014-15, there are currently 14 active centers, 5 of which are currently receiving state support. EIA funds appropriated for the CHE Centers of Excellence program flow-through the State Department of Education (Part 1A Education Improvement Act, F. Partnerships, Centers of Excellence (H03)) to CHE. Included in the appropriation are \$350,000 in funds to support an active center at Francis Marion University that had been initiated as a Center of Excellence. In FY15, the program grant funding was increased by \$250,000 to fund a new Center of Excellence in College and Career Readiness at Francis Marion		\$ 985,831		\$ 985,831		\$ 1,087,300		\$ 1,087,300	3.1.4, 3.1.6

Agency Name: Commission on Higher Education

Fiscal Year 2015-16
Accountability Report

Agency Code: H030 Section: 011

Program Template

Program/Title	Purpose	FY 2015-16 Expenditures (Actual)				FY 2016-17 Expenditures (Projected)				Associated Objective(s)
		General	Other	Federal	TOTAL	General	Other	Federal	TOTAL	
EIA-Funded Teacher Recruitment Programs	Two separate teacher recruitment projects provide leadership in identifying, attracting, placing and retaining well-qualified individuals for the teaching profession in our state. <u>SC State's Program for the Recruitment of Minority Teachers (SCPRRMT)</u> seeks to promote teaching as a career choice by publicizing the many career opportunities and benefits in the field of education in SC. The mission of SCPRRMT is to increase the pool of minority teachers in the State by making education accessible to non-traditional students (teacher assistants, career path changers, and technical college transfer students) and by providing an academic support system to help students meet entry, retention, and exit program requirements. SCPRRMT provides financial aid for its teacher education students and technical college studies. The purpose of <u>Winthrop's Center for Educator Recruitment, Retention, & Advancement (CERRA)</u> is to provide leadership in identifying, attracting, placing and retaining well-qualified individuals for the teaching profession in our state. In doing so, CERRA will respond to changing needs for teachers from underrepresented populations, in critical subject fields and in underserved		\$ 4,243,527		\$ 4,243,527		\$ 4,243,527		\$ 4,243,527	Funds flow through to intended recipients. CHE has responsibilities in review and recommending budgets of programs. 3.1.6

Agency Name: Commission on Higher Education

Fiscal Year 2015-16
Accountability Report

Agency Code: H030 Section: 011

Program Template

Program/Title	Purpose	FY 2015-16 Expenditures (Actual)				FY 2016-17 Expenditures (Projected)				Associated Objective(s)
		General	Other	Federal	TOTAL	General	Other	Federal	TOTAL	
LIFE Scholarships	The Legislative Incentive for Future Excellence Scholarship (LIFE) is a merit-based scholarship administered by the financial aid office at eligible SC public/independent colleges and universities. LIFE may be used towards cost-of-attendance for up to 8 terms based on initial college enrollment. Students must be enrolled in their first program - one-year, associate's degree, two-year program leading to a baccalaureate degree, baccalaureate degree, or professional degree. For initial eligibility at a 4-year institution, students must be an SC resident and attain 2 of 3 criteria; 1) have a 3.0 high school GPA (based on the UGP) 2) attain a 1100 SAT/ACT equivalent or 3) class rank in the top 30% of their graduating class. Initial eligibility at a 2-year college requires that students be a SC resident and have a 3.0 high school GPA (based on the UGP). LIFE recipients may earn up to \$5,000 and an additional up to \$2,500 beginning in the second year if majoring in eligible math/science programs.SC Code of Laws 59-149-10 et seq, 59-111-25, 59-101-430(B), Regulations, R .62-1200.1-1200.70.	\$ 24,329,882	\$ 170,402,664		\$ 194,732,546		\$ 199,754,741		\$ 199,754,741	2.1.6, 1.1.5

Agency Name: Commission on Higher Education

Fiscal Year 2015-16
Accountability Report

Agency Code: H030 Section: 011

Program Template

Program/Title	Purpose	FY 2015-16 Expenditures (Actual)				FY 2016-17 Expenditures (Projected)				Associated Objective(s)
		General	Other	Federal	TOTAL	General	Other	Federal	TOTAL	
SC HOPE Scholarships	The SC HOPE Scholarship Program was established under the SC Education Lottery Act approved by the General Assembly during the 2001 legislative session. The program is a merit-based scholarship created for students attending a four-year institution who do not qualify for the LIFE or Palmetto Fellows Scholarship. The scholarship is awarded during the freshman-year of attendance only. SC HOPE requires that students be an SC resident and have a 3.0 high school GPA (based on UGP) be enrolled in a four-year institution, and not be receiving the LIFE or Palmetto Fellows Scholarship. The award is for the first year only and students may receive up to \$2,800 toward the cost of attendance. SC HOPE recipients may become eligible for the LIFE Scholarship in subsequent years. SC Code of Laws 59-150-370, 59-101-430(B), Regulation 62.900.85-900.140.	\$ 231,727	\$ 9,237,561		\$ 9,469,288	\$ 9,552,955			\$ 9,552,955	2.1.6, 1.1.5

Agency Name: Commission on Higher Education

Fiscal Year 2015-16
Accountability Report

Agency Code: H030 Section: 011

Program Template

Program/Title	Purpose	FY 2015-16 Expenditures (Actual)				FY 2016-17 Expenditures (Projected)				Associated Objective(s)
		General	Other	Federal	TOTAL	General	Other	Federal	TOTAL	
Palmetto Fellows Scholarships	The Palmetto Fellows Scholarship(PF) is a merit-based scholarship program administered by CHE. PF requires that the student be an SC resident and attain a minimum 1200 SAT/ACT equivalent, a class rank in the top 6% (or for classes in which the top 6% is not a whole number, the next student), and a high school grade point average (GPA) of 3.5 based on the uniform grading policy (UGP). Alternatively, students may attain a 1400 SAT/or ACT equivalent and a high school GPA of 4.0 on the UGP. This award is provided for 8 semesters provided eligibility is maintained. Students must be enrolled in 4-year SC institutions. Effective in 2007 with legislation passed by the General Assembly, recipients beginning in the sophomore year may receive an enhanced award for majoring in math, science, engineering and health-related areas. Fellows may earn up to \$6,700 in the 1st year, \$2,500 in the 2nd through 4th years, and may additionally receive up to \$2,500 beginning in the second year if majoring in eligible math/science programs. SC Code of Laws 59-104-20, 59-143-10 et seq, 59-101-345, 59-111-25, Regulations R.62.300-375.	\$ 8,439,310	\$ 38,599,670		\$ 47,038,980	\$ 49,274,030			\$ 49,274,030	2.1.6, 1.1.5.

Agency Name: Commission on Higher Education

Fiscal Year 2015-16
Accountability Report

Agency Code: H030 Section: 011

Program Template

Program/Title	Purpose	FY 2015-16 Expenditures (Actual)				FY 2016-17 Expenditures (Projected)				Associated Objective(s)
		General	Other	Federal	TOTAL	General	Other	Federal	TOTAL	
Lottery Tuition Assistance	Lottery Tuition Assistance (LTA) provides aid for eligible students at two-year public and independent institutions. Students must complete the Free Application for Federal Student Aid (FAFSA), be degree-seeking, and be enrolled in a minimum of six hours to be eligible. Award amounts are set annually based on estimated student numbers and appropriations. In FY16, students were awarded up to \$1,200 per semester full-time or \$100 per credit hour. Appropriated total program funds are allocated and divided between CHE and State Technical College Board for the program as directed. The funds through CHE support students at eligible public 2-year campuses of USC and at Spartanburg Methodist College, the eligible independent institution. SC Code of Laws 59-150-360, Regulation R.62.900.150 - 62.900.195.		\$ 3,465,742		\$ 3,465,742		\$ 3,345,000		\$ 3,345,000	2.1.6, 1.1.5

Agency Name: Commission on Higher Education

Fiscal Year 2015-16
Accountability Report

Agency Code: H030 Section: 011

Program Template

Program/Title	Purpose	FY 2015-16 Expenditures (Actual)				FY 2016-17 Expenditures (Projected)				Associated Objective(s)
		General	Other	Federal	TOTAL	General	Other	Federal	TOTAL	
SC Need-Based Grants	Need-based funds provided to South Carolina college students at public institutions. A portion of these funds are authorized for private institutions (approximately 17% which is based on enrollments). Per statute, qualified students at public institutions may receive up to \$2,500 annually. The program is campus administered at the public institutions. The funds for independent institutions supplement the S.C. Tuition Grants program through which need based grants are provided for students attending the private institutions. The program has been funded additionally through the Education Endowment which is supported with Barnwell Nuclear Waste fee revenues and general fund appropriations. Need-based grants include funds transferred from the Charleston Transition Connection (see above) to provide need-based grants to students in recognized transition programs. SC Code of Laws 59-142-10 et seq, 59-143-10 et seq, 59-101-345, 59-111-25, Regulations R. 62.450-505.	\$ 1	\$ 17,124,703		\$ 17,124,704		\$ 17,537,078		\$ 17,537,078	2.1.6, 1.1.5.
Lottery Technology	The Commission on Higher Education must distribute the funds to those institutions that have applied pursuant to this provision. In the event that the total requested and verified reimbursements exceed the amount in the fund, the distribution to each public institution shall be reduced pro rata based on the institution's amount of verified reimbursements compared to the total amount of verified reimbursements of all institutions.		\$ 7,354,190		\$ 7,354,190		\$ 7,242,212		\$ 7,242,212	2.1.6

Agency Name: Commission on Higher Education

Fiscal Year 2015-16
Accountability Report

Agency Code: H030 Section: 011

Program Template

Program/Title	Purpose	FY 2015-16 Expenditures (Actual)				FY 2016-17 Expenditures (Projected)				Associated Objective(s)
		General	Other	Federal	TOTAL	General	Other	Federal	TOTAL	
Higher Education Excellence Enhancement	Aid to public and private Historically Black Colleges and Universities as well as other institutions identified in law for infrastructure development and enhancement of educational programs. The program was authorized by the General Assembly through 2-77-10, et seq, with the stated general purpose of enhancing the educational opportunities of low-income and educationally disadvantaged students. Funds for this activity flow-through CHE to eligible institutions as mandated. SC Code of Laws 2-77-10 et. seq.		\$ 4,597,755		\$ 4,597,755		\$ 6,072,474		\$ 6,072,474	Funds flow through to intended recipients. 3.1.6
College and University Out-of-State Veteran Tuition Differential Reimbursement Fund	The purpose of the fund is to reimburse public institutions of higher learning, as defined in Section 59-103-5 of the 1976 Code, for revenue loss resulting from the provisions of Section 59-112-50(C). By March 1, 2016, a public institution of higher learning seeking a reimbursement from this fund must submit an application to the Commission on Higher Education to receive a reimbursement from the fund. The total reimbursement to a public institution may not exceed the difference between the amounts the institution would have charged but for Section 59-112-50(C), and the amounts the institution actually charged. The Commission on Higher Education may require any proof it determines necessary to verify the veracity of the application.		\$ 3,007,899		\$ 3,007,899				\$ -	

Agency Name: Commission on Higher Education

Fiscal Year 2015-16
Accountability Report

Agency Code: H030 Section: 011

Program Template

Program/Title	Purpose	FY 2015-16 Expenditures (Actual)				FY 2016-17 Expenditures (Projected)				Associated Objective(s)
		General	Other	Federal	TOTAL	General	Other	Federal	TOTAL	
Public 2-yr & 4-yr colleges and universities, Critical Equipment, Repair & Replacement	Since FY 2012-13, funds have been provided through the lottery to support to public 2-year and 4-year colleges and universities for maintenance, repair and equipment needs. The funds flow through CHE to the institutions; a portion of the funds is directed to the State Technical College Board for the technical colleges and a portion to allocated by formula as directed to the research, comprehensive and 2-year regional campuses of USC.		\$ 2,825,028		\$ 2,825,028		\$ 4,227,500		\$ 4,227,500	2.1.4
Nonprofit bachelors level institution of higher learning, established in 1894, is a member of TRACS, with 60% or more low-income students	Lottery funds provided in FY15 to Clinton College for maintenance & improvement in classroom, library, laboratory, or other institutional facilities.		\$ 47,084		\$ 47,084				\$ -	Funds flow through to intended recipients.
Non-profit 4-year comprehensive institution of higher learning, first established as a college in 1908, is SACS accredited, with 40% or more minority enrollment	Lottery funds provided in FY16 to Coker College for maintenance and improvement in classroom, library, laboratory or other institutional facilities.		\$ 47,084		\$ 47,084				\$ -	Funds flow through to intended recipients.
Dayco Scholarships	The Dayco Scholarship is a merit-based/need-based scholarship administered by CHE. To be eligible, applicants must be either an employee or a dependent of an employee of Dayco Products, Inc. employed by a branch of the company located in SC for at least four calendar years. The Dayco Scholarship may be used towards the cost of attendance for up to eight terms based on the student's initial college enrollment date. Students must be enrolled in their first one-year program, first associate's degree, first two-year program leading to a baccalaureate degree, first baccalaureate degree, or first professional degree.		\$ -		\$ -		\$ 4,280		\$ 4,280	

Agency Name: Commission on Higher Education

Fiscal Year 2015-16
Accountability Report

Agency Code: H030 Section: 011

Program Template

Program/Title	Purpose	<i>FY 2015-16 Expenditures (Actual)</i>				<i>FY 2016-17 Expenditures (Projected)</i>				Associated Objective(s)
		General	Other	Federal	TOTAL	General	Other	Federal	TOTAL	
Summary Totals		\$ 68,386,251	\$ 271,223,589	\$ 3,769,109	\$ 343,378,949	\$ 36,703,069	\$ 312,717,799	\$ 4,729,832	\$ 354,150,700	

Agency Name: Commission on Higher Education

**Fiscal Year 2015-16
Accountability Report**

Agency Code: H030 **Section:** 011

Legal Standards Template

Item #	Law Number	Jurisdiction	Type of Law	Statutory Requirement and/or Authority Granted	Associated Program(s)
1	59-103	State	Statute	CHE authorizing legislation	All
2	59-104	State	Statute	Initiatives for Research and Academic Excellence. This chapter identifies a number of programs and initiatives overseen by CHE.	All
3	59-114	State	Statute	Establishes the SC National Guard College Assistance program and assigns CHE administrative and oversight responsibilities.	Student Affairs
4	59-142	State	Statute	Establishes the need-based grant program for public institutions. CHE has responsibilities for promulgating regulations and ensuring uniform administration by the colleges and universities.	Student Affairs, Fiscal Affairs
5	59-58	State	Statute	This chapter defines licensing for nonpublic postsecondary institutions and establishes CHE as the authority for carrying out this licensing function.	Academic Affairs
6	2-77	State	Statute	Establishes the lottery-funded SC Higher Education Excellence Enhancement Program. CHE is responsible for administering the provisions of the program.	Student Affairs, Fiscal Affairs
7	8-17-380	State	Statute	Establishes grievance and performance appraisal procedure for academic employees that shall be submitted to CHE.	All
8	11-51-40, 11-51-70, 11-51-125, 11-51-190	State	Statute	Provisions in the Life Sciences Act of 2004 relating to bond funds authorized research institutions for capital projects to build research infrastructure and for deferred maintenance projects for comprehensive 4-year and also 2-year colleges and assigned certain administrative responsibilities to CHE and the Research Centers of Excellence Review Board which is staffed by CHE.	Fiscal Affairs, External Affairs
9	59-101	State	Statute	Establishes various provisions relating to colleges and universities many of which in turn relate to administrative responsibilities for CHE.	All
10	59-112	State	Statute	Establishes the Critical Needs Nursing Act (2008) relating to salary enhancements, student scholarship and assistance programs for future nursing faculty, healthcare workforce research and simulation technology. Assigns administrative responsibilities to CHE. Funds were initially provided for faculty enhancement, but the Act is no longer funded.	All
11	59-118	State	Statute	Establishes the SC Academic Endowment Incentive Act (1997) which provides matching funds for public institutions. The program continues to be funded but not at levels intended when initially established.	Fiscal Affairs
12	59-149	State	Statute	Establishes the Legislative Incentives for Future Excellence (LIFE) Scholarship Program.	Student Affairs, Fiscal Affairs

13	11.5 (FY 16, Part 1B)	State	Proviso	(CHE: EPSCoR Committee Representation) Proviso established in FY 01. Proviso ensures representation of 4-year teaching institutions in the federal Experimental Program to Stimulate Competitive Research (EPSCoR) which is designed to increase research as SC public institutions.	All
14	11.7 (FY 16, Part 1B)	State	Proviso	(CHE: Performance Improvement Pool Allocation) Proviso initially provided for a performance improvement pool under Performance Funding. In FY 02, the funds controlled by this line were redirected to EPSCoR and SC State. Appropriations in FY 16: \$1,397,520 total with \$1,118,016 to EPSCoR and \$279,504 to SC State.	All
15	11.9 (FY 16, Part 1B)	State	Proviso	(CHE: Need-Based Grants for Foster Youth) Proviso established in FY 06. Enables foster youth to qualify for greater need-based grant awards at public institutions than allowed under program statute.	Student Affairs, Fiscal Affairs
16	11.11 (FY 16, Part 1B)	State	Proviso	(CHE: LIFE and Palmetto Fellows Enhancement Stipends) Proviso established in FY 11. Proviso provides that determination requirements of stipends are subject to verification and audit of the CHE.	Student Affairs, Fiscal Affairs
17	11.12 (FY 16, Part 1B)	State	Proviso	(CHE: SmartState) Proviso established in FY 13. Proviso provides that CHE is prohibited from expending any source of funds on the marketing of the SmartState program.	External Affairs, Fiscal Affairs
18	11.15 (FY 16, Part 1B)	State	Proviso	(CHE: College Transition Need-Based Grants) Proviso established in FY 14 and updated in FY 15 for continuation. Proviso established to re-direct recurring funding provided to a non-profit(Charleston Transition Connection) to be dedicated to need-based grant assistance for students now enrolled in recognized transition programs (USC, Clemson, College of Charleston, Coastal, and as of spring 2015, Winthrop). The dedicated funding is \$179,178, the level of CTC appropriations since FY 12. CTC received recurring funding initially in FY 08.	Fiscal Affairs
19	11.19 (FY 16, Part 1B)	State	Proviso	(CHE: Scholarship Awards) The General Assembly established in the FY 15 budget provisions to initiate awards of Palmetto Fellows and LIFE in the summer. The provision was continued in FY 16. CHE has adopted guidelines for implementation and the program is in effect.	Student Affairs
20	11.25 (FY 16, Part 1B)	State	Proviso	(CHE: Other Funded FTE Revenue) New proviso in FY 16. Each institution of higher learning, when requesting additional other funded full-time equivalent positions shall ensure to the CHE that sufficient revenues exist to fund the salary and fringe benefits for the positions.	Fiscal Affairs
21	11.29 (FY 16, Part 1B)	State	Proviso	(CHE: Abatements) New proviso in FY 16. Requires insitutional reporting to CHE on students receiving abatements for tuition and fees per 59-112-70 and numbers of waivers under 59-101-620.	Fiscal Affairs
22	11.30 (FY 16, Part 1B)	State	Proviso	(CHE: Outstanding Institutional Debt) New proviso in FY 16. Requires institutions to report information on debt to House and Senate Finance committees and CHE.	Fiscal Affairs

23	11.35 (FY 16, Part 1B)	State	Proviso	(CHE: Transferability) The CHE's Council of Presidents, or the council's designees, in consultation with the State Board for Technical and Comprehensive Education, or its designees, shall make a recommendation(s) to the Chairman of the Senate Education Committee and the Chairman of the House Education and Public Works Committee concerning policy options for the state to consider with regards to the development of a more seamless transition for students with associate degrees from public two-year institutions of higher learning wishing to transfer to public research institutions and four-year colleges and universities.	All
24	1A.58 (FY 16, Part 1B)	State	Proviso	(SDE-EIA: XII.F.2 - CHE/CERRA) Proviso initially included in the budget in FY 14 and was amended in FY 15 to include appeal to CHE. Any institution who applies but it not selected to host a Teaching Fellows program may appeal to the CHE.	Academic Affairs
25	1A.78 (FY 16, Part 1B)	State	Proviso	(SDE-EIA: Teacher Supply Study) New proviso in FY 16. With funds appropriated to the CERRA, in concert with the CHE, the Department of Education, and the Education Oversight Committee, CERRA shall initiate and conduct a study to identify and project the number of additional teachers needed annually in public school classrooms for grades K5 through 12, for school years beginning 2017 through 2027.	Academic Affairs
26	117.64 (FY 16, Part 1B)	State	Proviso	(GP: Prosecutors and Defenders Public Service Incentive Program) The Office of Attorney General, the Prosecution Coordination Commission, and the Commission on Indigent Defense, in consultation with the South Carolina Student Loan Corporation and CHE, shall develop and implement a Prosecutors and Defenders Public Service Incentive Program for attorneys employed by the Office of Attorney General, the Prosecution Coordination Commission, the Commission on Indigent Defense, a Circuit Solicitor's Office or a county Public Defender's Office.	All
27	117.73 (FY 16, Part 1B)	State	Proviso	(GP: Printed Report Requirements) Proviso implemented in FY 10 to reduce reporting requirements during the Recession. Suspends various reports across several agencies including certain higher education reports to CHE. The suspended CHE reports relate to institutional effectiveness, performance funding, and the annual reporting of grievances and action under the English Fluency in Higher Learning Act. The proviso also requires certain reports submitted for the CPIP process to be submitted only in electronic format.	All
28	1.17 (FY 16, Part 1B)	State	Proviso	(SDE: Teacher Data Collection) Relates to data sharing between SDE and CHE regarding the teaching profession in South Carolina.	All
29	20.5 (FY 16, Part 1B)	State	Proviso	(USC: Palmetto College - Operating) The allocation of recurring state appropriations of \$373,010 for the Palmetto College shall be reported to the CHE, the Chairman of the Senate Finance Committee, and the Chairman of the House Ways & Means Committee.	All

30	59-59-190, 59-59-210	State	Statute	Provisions within the Education and Economic Development Act of 2005 establish CHE responsibilities related to transfer and ensuring seamless educational transitions, working with the regional education centers, and others.	All
31	59-26-20	State	Statute	Relates to duties of SDE and CHE regarding certain programs relating to the teaching profession.	Academic Affairs

Agency Name: Commission on Higher Education

Agency Code: H030 **Section:** 11

Customer Template

Divisions or Major Programs	Description	Service/Product Provided to Customers	Customer Segments	<i>Specify only for the following Segments: (1) Industry: Name; (2) Professional Organization: Name; (3) Public: Demographics.</i>
Academic Affairs Division	Oversees academic programs quality including approval of academic programs at public institutions and licensing of non-public institutions that operate in SC	Termination and approval of academic degree programs; Approval of program modifications or changes to program concentrations	Executive Branch/State Agencies	
Student Affairs Division	Provides administrative oversight and coordination of student financial aid to provide statewide equity of awards and consistency of selection criteria.	Provide pertinent information about higher education to parents and students and to promote access to higher education.	General Public	Demographics: high school students and the parents of those students.
Fiscal Affairs Division	Provide operational support to the agency, manage information systems, review capital project requests, and manage finances of agency	Coordinate approval recommendations for capital projects, leases and land purchases of public colleges and universities	Executive Branch/State Agencies	
Fiscal Affairs Division	Provide operational support to the agency, manage information systems, review capital project requests, and manage finances of agency	Maintains funding system and data/accountability systems essential for understanding performance and productivity that serve as the source of required state and national data.	Executive Branch/State Agencies	
External Affairs Division	Maintain governmental, public and media relations	Maintain positive relations with the Governor, the Legislature, and state agencies.	Legislative Branch	

Agency Name: Commission on Higher Education

**Fiscal Year 2015-16
Accountability Report**

Agency Code: H030 **Section:** 011

Partner Template

Name of Partner Entity	Type of Partner Entity	Description of Partnership	Associated Objective(s)
Clemson University	Higher Education Institute	The Academic Affairs, Student Affairs, Fiscal Affairs and External Affairs divisions work closely with each college or university through the reviewal of academic programs, maintenance of funding distribution, approval of capital projects, coordination of student financial aid, and increasing public awareness of higher education.	1.1.1,1.1.2,2.1.1,2.1.2,2.1.3,2.1.4,2.1.5, 2.1.6,2.2.1,2.2.2,2.2.3,2.2.4
U. S. C. - Columbia	Higher Education Institute	The Academic Affairs, Student Affairs, Fiscal Affairs and External Affairs divisions work closely with each college or university through the reviewal of academic programs, maintenance of funding distribution, approval of capital projects, coordination of student financial aid, and increasing public awareness of higher education.	1.1.1,1.1.2,2.1.1,2.1.2,2.1.3,2.1.4,2.1.5, 2.1.6,2.2.1,2.2.2,2.2.3,2.2.4
Medical University of South Carolina	Higher Education Institute	The Academic Affairs, Student Affairs, Fiscal Affairs and External Affairs divisions work closely with each college or university through the reviewal of academic programs, maintenance of funding distribution, approval of capital projects, coordination of student financial aid, and increasing public awareness of higher education.	1.1.1,1.1.2,2.1.1,2.1.2,2.1.3,2.1.4,2.1.5, 2.1.6,2.2.1,2.2.2,2.2.3,2.2.4
The Citadel	Higher Education Institute	The Academic Affairs, Student Affairs, Fiscal Affairs and External Affairs divisions work closely with each college or university through the reviewal of academic programs, maintenance of funding distribution, approval of capital projects, coordination of student financial aid, and increasing public awareness of higher education.	1.1.1,1.1.2,2.1.1,2.1.2,2.1.3,2.1.4,2.1.5, 2.1.6,2.2.1,2.2.2,2.2.3,2.2.4
Coastal Carolina University	Higher Education Institute	The Academic Affairs, Student Affairs, Fiscal Affairs and External Affairs divisions work closely with each college or university through the reviewal of academic programs, maintenance of funding distribution, approval of capital projects, coordination of student financial aid, and increasing public awareness of higher education.	1.1.1,1.1.2,2.1.1,2.1.2,2.1.3,2.1.4,2.1.5, 2.1.6,2.2.1,2.2.2,2.2.3,2.2.4
College of Charleston	Higher Education Institute	The Academic Affairs, Student Affairs, Fiscal Affairs and External Affairs divisions work closely with each college or university through the reviewal of academic programs, maintenance of funding distribution, approval of capital projects, coordination of student financial aid, and increasing public awareness of higher education.	1.1.1,1.1.2,2.1.1,2.1.2,2.1.3,2.1.4,2.1.5, 2.1.6,2.2.1,2.2.2,2.2.3,2.2.4

Francis Marion University	Higher Education Institute	The Academic Affairs, Student Affairs, Fiscal Affairs and External Affairs divisions work closely with each college or university through the reviewal of academic programs, maintenance of funding distribution, approval of capital projects, coordination of student financial aid, and increasing public awareness of higher education.	1.1.1,1.1.2,2.1.1,2.1.2,2.1.3,2.1.4,2.1.5, 2.1.6,2.2.1,2.2.2,2.2.3,2.2.4
Lander University	Higher Education Institute	The Academic Affairs, Student Affairs, Fiscal Affairs and External Affairs divisions work closely with each college or university through the reviewal of academic programs, maintenance of funding distribution, approval of capital projects, coordination of student financial aid, and increasing public awareness of higher education.	1.1.1,1.1.2,2.1.1,2.1.2,2.1.3,2.1.4,2.1.5, 2.1.6,2.2.1,2.2.2,2.2.3,2.2.4
South Carolina State University	Higher Education Institute	The Academic Affairs, Student Affairs, Fiscal Affairs and External Affairs divisions work closely with each college or university through the reviewal of academic programs, maintenance of funding distribution, approval of capital projects, coordination of student financial aid, and increasing public awareness of higher education.	1.1.1,1.1.2,2.1.1,2.1.2,2.1.3,2.1.4,2.1.5, 2.1.6,2.2.1,2.2.2,2.2.3,2.2.4
U. S. C. - Aiken	Higher Education Institute	The Academic Affairs, Student Affairs, Fiscal Affairs and External Affairs divisions work closely with each college or university through the reviewal of academic programs, maintenance of funding distribution, approval of capital projects, coordination of student financial aid, and increasing public awareness of higher education.	1.1.1,1.1.2,2.1.1,2.1.2,2.1.3,2.1.4,2.1.5, 2.1.6,2.2.1,2.2.2,2.2.3,2.2.4
U. S. C. - Beaufort	Higher Education Institute	The Academic Affairs, Student Affairs, Fiscal Affairs and External Affairs divisions work closely with each college or university through the reviewal of academic programs, maintenance of funding distribution, approval of capital projects, coordination of student financial aid, and increasing public awareness of higher education.	1.1.1,1.1.2,2.1.1,2.1.2,2.1.3,2.1.4,2.1.5, 2.1.6,2.2.1,2.2.2,2.2.3,2.2.4
U. S. C. - Upstate	Higher Education Institute	The Academic Affairs, Student Affairs, Fiscal Affairs and External Affairs divisions work closely with each college or university through the reviewal of academic programs, maintenance of funding distribution, approval of capital projects, coordination of student financial aid, and increasing public awareness of higher education.	1.1.1,1.1.2,2.1.1,2.1.2,2.1.3,2.1.4,2.1.5, 2.1.6,2.2.1,2.2.2,2.2.3,2.2.4

Winthrop University	Higher Education Institute	The Academic Affairs, Student Affairs, Fiscal Affairs and External Affairs divisions work closely with each college or university through the reviewal of academic programs, maintenance of funding distribution, approval of capital projects, coordination of student financial aid, and increasing public awareness of higher education.	1.1.1,1.1.2,2.1.1,2.1.2,2.1.3,2.1.4,2.1.5, 2.1.6,2.2.1,2.2.2,2.2.3,2.2.4
U. S. C. - Lancaster	Higher Education Institute	The Academic Affairs, Student Affairs, Fiscal Affairs and External Affairs divisions work closely with each college or university through the reviewal of academic programs, maintenance of funding distribution, approval of capital projects, coordination of student financial aid, and increasing public awareness of higher education.	1.1.1,1.1.2,2.1.1,2.1.2,2.1.3,2.1.4,2.1.5, 2.1.6,2.2.1,2.2.2,2.2.3,2.2.4
U. S. C. - Salkehatchie	Higher Education Institute	The Academic Affairs, Student Affairs, Fiscal Affairs and External Affairs divisions work closely with each college or university through the reviewal of academic programs, maintenance of funding distribution, approval of capital projects, coordination of student financial aid, and increasing public awareness of higher education.	1.1.1,1.1.2,2.1.1,2.1.2,2.1.3,2.1.4,2.1.5, 2.1.6,2.2.1,2.2.2,2.2.3,2.2.4
U. S. C. - Sumter	Higher Education Institute	The Academic Affairs, Student Affairs, Fiscal Affairs and External Affairs divisions work closely with each college or university through the reviewal of academic programs, maintenance of funding distribution, approval of capital projects, coordination of student financial aid, and increasing public awareness of higher education.	1.1.1,1.1.2,2.1.1,2.1.2,2.1.3,2.1.4,2.1.5, 2.1.6,2.2.1,2.2.2,2.2.3,2.2.4
U. S. C. - Union	Higher Education Institute	The Academic Affairs, Student Affairs, Fiscal Affairs and External Affairs divisions work closely with each college or university through the reviewal of academic programs, maintenance of funding distribution, approval of capital projects, coordination of student financial aid, and increasing public awareness of higher education.	1.1.1,1.1.2,2.1.1,2.1.2,2.1.3,2.1.4,2.1.5, 2.1.6,2.2.1,2.2.2,2.2.3,2.2.4
Aiken Technical College	Higher Education Institute	The Academic Affairs, Student Affairs, Fiscal Affairs and External Affairs divisions work closely with each college or university through the reviewal of academic programs, maintenance of funding distribution, approval of capital projects, coordination of student financial aid, and increasing public awareness of higher education.	1.1.1,1.1.2,2.1.1,2.1.2,2.1.3,2.1.4,2.1.5, 2.1.6,2.2.1,2.2.2,2.2.3,2.2.4

Central Carolina Technical College	Higher Education Institute	The Academic Affairs, Student Affairs, Fiscal Affairs and External Affairs divisions work closely with each college or university through the reviewal of academic programs, maintenance of funding distribution, approval of capital projects, coordination of student financial aid, and increasing public awareness of higher education.	1.1.1,1.1.2,2.1.1,2.1.2,2.1.3,2.1.4,2.1.5, 2.1.6,2.2.1,2.2.2,2.2.3,2.2.4
Denmark Technical College	Higher Education Institute	The Academic Affairs, Student Affairs, Fiscal Affairs and External Affairs divisions work closely with each college or university through the reviewal of academic programs, maintenance of funding distribution, approval of capital projects, coordination of student financial aid, and increasing public awareness of higher education.	1.1.1,1.1.2,2.1.1,2.1.2,2.1.3,2.1.4,2.1.5, 2.1.6,2.2.1,2.2.2,2.2.3,2.2.4
Florence-Darlington Techical College	Higher Education Institute	The Academic Affairs, Student Affairs, Fiscal Affairs and External Affairs divisions work closely with each college or university through the reviewal of academic programs, maintenance of funding distribution, approval of capital projects, coordination of student financial aid, and increasing public awareness of higher education.	1.1.1,1.1.2,2.1.1,2.1.2,2.1.3,2.1.4,2.1.5, 2.1.6,2.2.1,2.2.2,2.2.3,2.2.4
Greenville Technical College	Higher Education Institute	The Academic Affairs, Student Affairs, Fiscal Affairs and External Affairs divisions work closely with each college or university through the reviewal of academic programs, maintenance of funding distribution, approval of capital projects, coordination of student financial aid, and increasing public awareness of higher education.	1.1.1,1.1.2,2.1.1,2.1.2,2.1.3,2.1.4,2.1.5, 2.1.6,2.2.1,2.2.2,2.2.3,2.2.4
Horry-Georgetown Technical College	Higher Education Institute	The Academic Affairs, Student Affairs, Fiscal Affairs and External Affairs divisions work closely with each college or university through the reviewal of academic programs, maintenance of funding distribution, approval of capital projects, coordination of student financial aid, and increasing public awareness of higher education.	1.1.1,1.1.2,2.1.1,2.1.2,2.1.3,2.1.4,2.1.5, 2.1.6,2.2.1,2.2.2,2.2.3,2.2.4
Midlands Technical College	Higher Education Institute	The Academic Affairs, Student Affairs, Fiscal Affairs and External Affairs divisions work closely with each college or university through the reviewal of academic programs, maintenance of funding distribution, approval of capital projects, coordination of student financial aid, and increasing public awareness of higher education.	1.1.1,1.1.2,2.1.1,2.1.2,2.1.3,2.1.4,2.1.5, 2.1.6,2.2.1,2.2.2,2.2.3,2.2.4

Northeastern Technical College	Higher Education Institute	The Academic Affairs, Student Affairs, Fiscal Affairs and External Affairs divisions work closely with each college or university through the reviewal of academic programs, maintenance of funding distribution, approval of capital projects, coordination of student financial aid, and increasing public awareness of higher education.	1.1.1,1.1.2,2.1.1,2.1.2,2.1.3,2.1.4,2.1.5, 2.1.6,2.2.1,2.2.2,2.2.3,2.2.4
Orangeburg-Calhoun Technical College	Higher Education Institute	The Academic Affairs, Student Affairs, Fiscal Affairs and External Affairs divisions work closely with each college or university through the reviewal of academic programs, maintenance of funding distribution, approval of capital projects, coordination of student financial aid, and increasing public awareness of higher education.	1.1.1,1.1.2,2.1.1,2.1.2,2.1.3,2.1.4,2.1.5, 2.1.6,2.2.1,2.2.2,2.2.3,2.2.4
Piedmont Technical College	Higher Education Institute	The Academic Affairs, Student Affairs, Fiscal Affairs and External Affairs divisions work closely with each college or university through the reviewal of academic programs, maintenance of funding distribution, approval of capital projects, coordination of student financial aid, and increasing public awareness of higher education.	1.1.1,1.1.2,2.1.1,2.1.2,2.1.3,2.1.4,2.1.5, 2.1.6,2.2.1,2.2.2,2.2.3,2.2.4
Spartanburg Community College	Higher Education Institute	The Academic Affairs, Student Affairs, Fiscal Affairs and External Affairs divisions work closely with each college or university through the reviewal of academic programs, maintenance of funding distribution, approval of capital projects, coordination of student financial aid, and increasing public awareness of higher education.	1.1.1,1.1.2,2.1.1,2.1.2,2.1.3,2.1.4,2.1.5, 2.1.6,2.2.1,2.2.2,2.2.3,2.2.4
Technical College of The Lowcountry	Higher Education Institute	The Academic Affairs, Student Affairs, Fiscal Affairs and External Affairs divisions work closely with each college or university through the reviewal of academic programs, maintenance of funding distribution, approval of capital projects, coordination of student financial aid, and increasing public awareness of higher education.	1.1.1,1.1.2,2.1.1,2.1.2,2.1.3,2.1.4,2.1.5, 2.1.6,2.2.1,2.2.2,2.2.3,2.2.4
Tri-County Technical College	Higher Education Institute	The Academic Affairs, Student Affairs, Fiscal Affairs and External Affairs divisions work closely with each college or university through the reviewal of academic programs, maintenance of funding distribution, approval of capital projects, coordination of student financial aid, and increasing public awareness of higher education.	1.1.1,1.1.2,2.1.1,2.1.2,2.1.3,2.1.4,2.1.5, 2.1.6,2.2.1,2.2.2,2.2.3,2.2.4

Trident Technical College	Higher Education Institute	The Academic Affairs, Student Affairs, Fiscal Affairs and External Affairs divisions work closely with each college or university through the reviewal of academic programs, maintenance of funding distribution, approval of capital projects, coordination of student financial aid, and increasing public awareness of higher education.	1.1.1,1.1.2,2.1.1,2.1.2,2.1.3,2.1.4,2.1.5, 2.1.6,2.2.1,2.2.2,2.2.3,2.2.4
Williamsburg Technical College	Higher Education Institute	The Academic Affairs, Student Affairs, Fiscal Affairs and External Affairs divisions work closely with each college or university through the reviewal of academic programs, maintenance of funding distribution, approval of capital projects, coordination of student financial aid, and increasing public awareness of higher education.	1.1.1,1.1.2,2.1.1,2.1.2,2.1.3,2.1.4,2.1.5, 2.1.6,2.2.1,2.2.2,2.2.3,2.2.4
York Technical College	Higher Education Institute	The Academic Affairs, Student Affairs, Fiscal Affairs and External Affairs divisions work closely with each college or university through the reviewal of academic programs, maintenance of funding distribution, approval of capital projects, coordination of student financial aid, and increasing public awareness of higher education.	1.1.1,1.1.2,2.1.1,2.1.2,2.1.3,2.1.4,2.1.5, 2.1.6,2.2.1,2.2.2,2.2.3,2.2.4
SC Department of Commerce	State Government	The External Affairs and Fiscal Affairs divisions work with the SC Department of Commerce through the Endowed Chairs Program.	3.1.1,,3.1.3,3.1.4,3.1.5,3.1.6
SC Department of Employment and Workforce	State Government	CHE works with the SC Department of Employment and Workforce through data sharing as it relates to higher education and job skills.	3.1.1,,3.1.3,3.1.4,3.1.5,3.1.6
SC Department of Education	State Government	CHE works with the SC Department of Education with areas such as the teaching profession, data collection and teacher studies.	3.1.1,3.1.2,3.1.3,3.1.4,3.1.5,3.1.6
Higher Education Tuition Grants Commission	State Government	CHE, through the Fiscal Affairs division, works with the Higher Education Tuition Grants Commission for the Need Based Grants program.	3.1.1,,3.1.3,3.1.4,3.1.5,3.1.6
Independent Colleges	Higher Education Institute	The Academic Affairs, Student Affairs, Fiscal Affairs and External Affairs divisions work closely with each college or university through the reviewal of academic programs, maintenance of funding distribution, coordination of student financial aid, and increasing public awareness of higher education.	
SC Chamber of Commerce	Professional Association	The SC Chamber of Commerce works with CHE in the Gear Up program which is located in the Student Services division.	3.1.1,,3.1.3,3.1.4,3.1.5,3.1.6

Agency Name: Commission on Higher Education

Fiscal Year 2015-16
Accountability Report

Agency Code: H030 Section: 011

Report Template

Item	Report Name	Name of Entity Requesting the Report	Type of Entity	Reporting Frequency	Submission Date (MM/DD/YYYY)	Summary of Information Requested in the Report	Method to Access the Report
1	Lottery Fund Expenditures	Executive Budget Office	State	Annually	October 1, 2015	Summary of how lottery funds were expended in the prior fiscal year, issues and concerns as well as institution responses to those issues and concerns discovered as a result of the Commission's verification and/or audit activity during the prior fiscal year.	Request from the Agency
2	Technology Fund Utilization	Senate Finance and House Ways and Means	State	Annually	November 18, 2015	Report showing the utilization of the technology funds appropriated from lottery funds for technology repair and related technology maintenance and/or upgrades that are necessary to support an institution's educational purpose.	Request from the Agency
3	Annual Accountability Report	Executive Budget Office	State	Annually	September 15, 2015	The Accountability Report is intended to report an agency's performance and to provide a discussion of prior year expenditures and associates expenditures with prospective goals, strategies and objectives.	Executive Budget Office Website
4	Debt Collection Report	Senate Finance and House Ways and Means	State	Annually	February 28, 2015	Details the amount of the outstanding debt and all methods the agency has used to collect that debt.	Request from the Agency
5	Fines and Fees Report	Senate Finance and House Ways and Means	State	Annually	September 1, 2015	Provide and release the the public via the agency's website, a report of all aggregate amounts of fines and fees that were charged and collected by the state agency in the prior fiscal year.	Agency Website
6	Bank Account Transparency and Accountability	State Fiscal Accountability Authority	State	Annually	October 1, 2015	Report should show any composite reservoir bank accounts or any other accounts containing public funds which are not included in the Comptroller General's Enterprise System. Report should disclose every transaction of the account in the prior fiscal year.	Comptroller General's Website
7	Single Audit Schedule of Federal Expenditures	Office of State Auditor	State	Annually	August 15, 2015	Schedule of federal program expenditures in a formate prescribed by the Office of the State Auditor.	Request from the Agency

8	Informatin Technology and Information Security Plans	Department of Administration	State	Annually	October 1, 2015	<p>This report is the information technology plan and information security plan. The information technology plans might include information technology objectives, an inventory, any performance measures, how the state agency's development of information technology coordinates with other governmental entities, the state agency's budget plans for information technology for the coming fiscal year or the state agency's need for appropriations for information technology.</p> <p>The information security plans required by this section shall include at least: the information security objectives, an inventory, a profile of the state agency's compliance with security policies established by the division, a profile of the state agency's sensitive data and a description of applicable state and federal privacy requirements, a profile of risk management and other measures taken by the state agency to protect its data from unauthorized access and disclosure, or the state agency's budget plans for information security for the coming fiscal year.</p>	Request from the Agency
9	Technical College Study	General Assembly	State	Annually	January 31, 2016	<p>Summary of findings examining the viability of a program that allows a student who graduated from a high school in this state or who attained the state educational equivalency of a high school diploma to attend a state technical college without paying tuition and fees at the institution for a specified period.</p>	Request from the Agency

Agency Name: Commission on Higher Education

**Fiscal Year 2015-16
Accountability Report**

Agency Code: H030 **Section:** 011

Oversight Review Template

Item	Name of Entity Conducted Oversight Review	Type of Entity	Oversight Review Timeline (MM/DD/YYYY to MM/DD/YYYY)	Method to Access the Oversight Review Report
1	Office of the State Auditor	State	03/01/2016 to 03/31/2016	Office of the State Auditor Website
2	Commission on Higher Education	State	1/1/2016 to 5/24/2016	South Carolina Commission on Higher Education Providing Clarity, Best Practices, and Sustainability Report is on the Agency's Website.