

South Carolina Commission on Higher Education

Brig Gen John L. Finan, USAF (Ret.), Chair
Dr. Bettie Rose Horne, Vice Chair
Mr. Paul O. Batson, III
Mr. Tim M. Hofferth
Ms. Dianne C. Kuhl
Ms. Allison Dean Love
Dr. Louis B. Lynn
Vice Admiral Charles Munns, USN (ret.)
Mr. Clark B. Parker
Mr. Kim F. Phillips
Ms. Terrye C. Seckinger
Dr. Jennifer B. Settlemyer
Mr. Hood Temple
Dr. Evans Whitaker

Ms. Julie J. Carullo
Interim Executive Director

CHE
9/3/2015
Agenda Item 5.02.E

September 3, 2015

MEMORANDUM

To: Chairman John L. Finan and Members, S.C. Commission on Higher Education

From: Dr. Bettie Rose Horne, Chair, and Members, Committee on Academic Affairs and Licensing

Report on Terminated and Approved Academic Programs and Program Modifications, July 2014 – June 2015 (For Information)

Background

This report is presented to members of the Commission to provide an overview of program activity from July 1, 2014, through June 30, 2015. The report includes academic degree programs terminated and approved; program modifications approved; changes to program concentrations; programs extended to specific sites or terminated from specific sites; and new and terminated certificates.

Termination and Approval of Academic Degree Programs

In fiscal year 2014-15, 10 colleges and universities (four four-year and six two-year) terminated a total of 20 academic degree programs. During this time, 13 colleges and universities (nine four-year and four two-year) received approval to offer a total of 26 new academic degree programs. The following tables show the academic degree programs terminated and approved.

Table 1: Academic Degree Programs Terminated and Approved, Four-Year Institutions

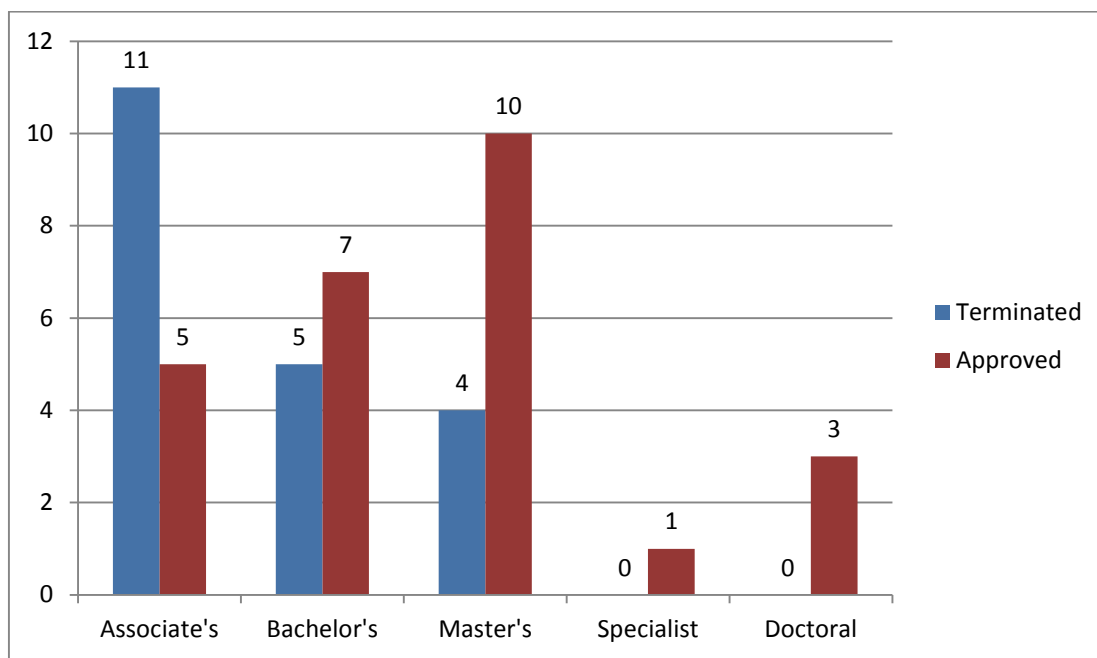
Institution	Terminated	Approved
The Citadel	B.A., Mathematics	M.A., International Politics and Military Affairs
Clemson University		B.A., World Cinema M.S., Athletic Leadership M.A.T., Special Education, with three concentrations Ph.D., Learning Sciences Ph.D., Literacy, Language and Culture Ph.D., Special Education
Coastal Carolina University	B.A., Psychology M.Ed., Learning & Teaching- Early/Elem Grades	M.S., Sport Management B.A., Digital Culture and Design B.S., Engineering Science Ed.S., Instructional Technology
College of Charleston		B.S., A.B., Supply Chain Management
Francis Marion University		M.S., Physician Assistant Studies
Lander University	B.A., Psychology M.A.T., Art Education	
Medical University of SC	B.S., Health Sciences B.S., Health Professions and Related Sciences Master of Health Administration (M.H.A.), International M.S.N., Nursing Health Care Systems	M.S., Medical Sciences M.P.H., Biostatistics M.P.H., Epidemiology M.P.H., Health Behavior and Health Promotion
USC Aiken		B.S., Industrial Process Engineering
USC Beaufort		B.S., Mathematics, with tracks in Mathematical Sciences and Secondary Mathematics Certification
USC Columbia		M.S., Advanced Athletic Training B.S., Pharmaceutical Sciences

Note: If an institution is not listed in the table, it did not terminate any programs or have any new programs approved.

Table 2: Academic Degree Programs Terminated and Approved, Technical Colleges

Institution	Terminated	Approved
Florence-Darlington Technical College	A.A.S., Computer Technology A.A.S., Electro-Mechanical Engineering Technology A.A.S., Engineering Graphics Technology	
Greenville Technical College		A.A.S., Auto Body Repair
Horry-Georgetown Technical College	A.A.S., Horticulture Technology A.A.S., Pharmacy Technology	A.A.S., Brewmaster and Brewery Operations A.A.S., Machine Tool Technology
Orangeburg-Calhoun Technical College	A.A.S., Medical Laboratory Technology	
Piedmont Technical College		A.A.S., Occupational Therapy Assistant
Spartanburg Community College	A.A.S., Civil Engineering Technology A.A.S., Engineering Graphics Technology A.A.S., Mechanical Engineering Technology	A.A.S., Mechatronics Technology
Technical College of the Lowcountry	A.A.S, General Business, Law Enforcement/Security Management	
Trident Technical College	A.A.S., Machine Tool Technology	

Figure 1. Terminated and Approved Academic Degree Programs by Degree Level



As shown in Figure 1, the majority of the academic degree program terminations occurred at the associate's degree levels, while the majority of new programs approved occurred at the bachelor's and master's degree levels. In addition, as shown in Table 3 below, the technical colleges terminated the most programs, while the research institutions received the majority of new program approvals.

Table 3. Terminated and Approved Academic Degree Programs by Institution Type

	Terminated Programs	Approved Programs	Net
Technical Colleges	11	5	-6
Regional Two-Year Campuses	0	0	0
Comprehensive Teaching Institutions	5	9	4
Research Universities	4	12	8
Total	20	26	6

Modifications of Academic Degree Programs

The following program modifications were approved by Commission staff during FY 2014-15.

Clemson University

- The Ph.D. in Curriculum and Instruction was modified to redevelop three concentrations into four concentrations.
- The following programs were modified to be offered at the at the Clemson University Restoration Institute in North Charleston, SC, and the Lowcountry Graduate Center in North Charleston, SC:
 - M.S., Civil Engineering
 - M.S., Computer Engineering
 - M.S., Computer Science
 - M.S., Electrical Engineering
 - M.S., Environmental Engineering and Science
 - M.S., Industrial Engineering
 - M.S., Materials Science and Engineering
 - M.S., Mechanical Engineering
 - Ph.D., Industrial Engineering
 - Ph.D., Materials Science and Engineering
 - M.ENG., Electrical Engineering
 - M.ENG., Industrial Engineering
 - M.ENG., Systems Engineering
 - M.F.A., Digital Production Arts
 - Ph.D., Civil Engineering
 - Ph.D., Computer Engineering
 - Ph.D., Computer Science
 - Ph.D., Electrical Engineering
 - Ph.D., Environmental Engineering and Science
 - Ph.D., Mechanical Engineering

Coastal Carolina University

- The B.S. in Health Administration Completion was modified to change the entry requirements.

Lander University

- The B.A. in Visual Arts added a concentration in Entrepreneurship.

Medical University of South Carolina

- The M.D. program was modified to expand clinical training to AnMed Health in Anderson, SC.
- The Ph.D. in Nursing Science was modified to transition into an accelerated program.
- The D.N.P. added a concentration in Executive Leadership and Innovations.

South Carolina State University

- The B.S. in Industrial Engineering Technology was modified to transition into the B.S. in Industrial Engineering.
- The B.S. in Industrial Education added a concentration in Industrial Technology.

University of South Carolina Aiken

- The B.S. in Biology added a concentration in Molecular Biology.

University of South Carolina Columbia

- The concentration in Mass Communications in the B.A.J.M.C. in Journalism was elevated to a stand-alone program, the B.A.J.M.C. in Mass Communications.
- The B.S.B.A. in International Business added four concentrations: Middle East and North Africa (MENA) Business, European Business, South American Business, and Eurasian Business.
- The M.D. program was modified to add a clinical site in Florence, SC.
- The M. Econ. added a concentration in Financial Economics.

Winthrop University

- The B.S. in Chemistry added six concentrations: ACS Chemistry, ACS Biochemistry, ACS Engineering-Physics, ACS Forensic Chemistry, ACS Chemistry-Business, and Biochemistry.
- The M.A.T. in Theatre added a teacher certification program in Theatre.
- The M.A.T. in Dance added a teacher certification program in Dance.
- The M.F.A. in Art and Design was modified to transition to the M.F.A. in Studio Art.
- The M.Ed. in Special Education was modified to transition to the M.Ed. in Special Education Intervention.

Program Concentrations

Table 4 shows program concentrations terminated or added during FY 2014-15.

Table 4: Program Concentrations Terminated and Added

Institution	Terminated Concentrations	Added Concentrations
Clemson University	<i>Community and Economic Development</i> from the B.S. in Agribusiness <i>Textiles</i> from the B.A. in Language and International Trade	<i>Food Science and Technology</i> to the B.S. in Food Science.
Coastal Carolina University		<i>Applied Economic Analysis and Economic Theory</i> to the B.S.B.A. in Economics <i>Behavioral Neuroscience</i> to the B.S. in Psychology
Francis Marion University	<i>Health Management</i> from the M.B.A.	<i>Human Resource Management and Supply Chain Management</i> to the B.B.A. in Management
Lander University	<i>Counseling</i> from the B.S. in Psychology <i>Pre-Law</i> from the B.A. in Political Science <i>Physical Education</i> from the B.S. in Physical Education	<i>K-12 Teacher Certification</i> to the B.S. in Visual Arts <i>Vocal</i> to the B.S. in Music
South Carolina State University		<i>Health Education Services</i> to the B.S. in Physical Education <i>International Studies and African American Studies</i> to the B.A. in History
USC Beaufort		<i>Media Arts</i> to the B.A. in Studio Arts
USC Columbia	<i>General, Actuarial Math and Statistics, and Applied Mathematics</i> from the B.S. in Mathematics <i>Physical Electronic, Power Systems, High Voltage Engineering, and Semiconductor Engineering</i> from the following programs: B.S.E. in Electrical Engineering; M.S. Electrical Engineering; M.E. in Electrical Engineering; and Ph.D. in Electrical Engineering	<i>Business Data Analytics</i> to the following programs: B.S.B.A. in Risk Management; B.S.B.A. in Real Estate; B.S.B.A. in Marketing; B.S.B.A. in Management Science; B.S.B.A. in Finance; B.S.B.A. in Management; B.S.B.A. in Business Economics; and B.S.B.A. in Accounting <i>Educational Technology</i> to the Ed.D. in Curriculum and Instruction <i>Emergency Management and Planning</i> to the Master of Public Administration <i>Music Theory</i> to the Master of Music
USC Upstate	<i>Exercise Science</i> from the B.S.Ed. in Physical Education.	
Winthrop University	<i>Early Childhood Education and Elementary Education</i> from the M.Ed. in Curriculum and Instruction* <i>Personal Financial</i> from the B.S. in Business Administration <i>Public Administration</i> from the B.A. in Political Science	<i>Early Childhood/Elementary Education</i> to the M.Ed. in Curriculum and Instruction*
Tri-County Technical College		<i>Medical</i> to the A.A.S. in Administrative Office Technology

* Two concentrations were merged into a single concentration.

Programs Terminated from and Extended to Specific Sites

The programs terminated from or extended to specific sites during FY 2104-15 are listed below.

Table 5: Programs Terminated from and Extended to Specific Sites

Institution	Programs Terminated from Specific Sites	Programs Extended to Specific Sites
Coastal Carolina University		Blended Delivery for the Literacy concentration of the M.Ed. in Learning and Teaching
Lander University	University Center of Greenville from the B.S. in Psychology University Center of Greenville from the B.S. in Visual Art	
USC Columbia		Blended Delivery added to the B.A. in Liberal Studies Blended Delivery added to the B.A. in Organizational Leadership
Winthrop University	Charlotte-Mecklenburg Schools from the M.Ed. in Special Education On-Campus site from the M.Ed. in Special Education	Blended Delivery added to the M.Ed. in Literacy
Greenville Technical College		Florence-Darlington Technical College campus added to the A.A.S. in Physical Therapy Assistant McKinney Regional Automotive Center to the A.A.S. in Auto Body Repair
Spartanburg Community College		New Downtown campus added to the following programs: General A.A. and A.S. programs, A.A.S. in General Technology, A.A.S. in Accounting, A.A.S. in Automated Manufacturing Technology, and A.A.S. in Management
Trident Technical College	Main Campus from the A.A.S. in Aircraft Maintenance Technology	Berkeley campus to the A.A.S. in Aircraft Maintenance Technology

Certificate Programs

The certificate programs terminated or added by institutions during FY 2014-15 are listed below.

Table 6: Certificate Programs Terminated and Added

Institution	Certificate Programs Terminated	Certificate Programs Added
The Citadel		Post-baccalaureate Certificate in Systems Engineering Management Post-baccalaureate Certificate in Cybersecurity Post-baccalaureate Certificate in History and Teaching Content Post-baccalaureate Certificate in Student Affairs Post-baccalaureate Certificate in Hispanic Studies Post-baccalaureate Certificate in Technical Program Management Post-baccalaureate Certificate in Technical Project Management Post-baccalaureate Certificate in Intelligence Analysis Post-baccalaureate Certificate in Leadership Post-baccalaureate Certificate in Literacy Education Post-baccalaureate Certificate in Homeland Security Post-baccalaureate Certificate in Sport Management-Sport Sales and Marketing Post-baccalaureate Certificate in Environmental Studies
Clemson University		Certificate in Global Health in Low Resource Countries
Coastal Carolina University		Certificate in Sustainability Post-baccalaureate Certificate in Business Foundations
College of Charleston		Post-baccalaureate Certificate in Cybersecurity
Medical University of SC	Post-baccalaureate Certificate in Health Systems/Health Services Post-baccalaureate Certificate in Clinical Research Ethics Post-Master's Certificate in Nursing Administrator, Nurse Educator	
Winthrop University		Post-baccalaureate Certificate in Learning Technologies Post-baccalaureate Certificate in Arts Administration

Comparison of Terminated and Approved Academic Degree Programs and Program Concentrations, Sites, and Certificates

The previous tables show that academic degree programs, program concentrations, sites, and certificate programs terminated and approved encompass several different fields. Table 7 compares the number of academic degree programs, program concentrations, and sites terminated with the number of those approved/added by curricular area. Table 8 compares the number of academic degree programs, program concentrations, sites, and certificate programs terminated with the number of those approved/added by institution while Tables 9 and 10 compare the same information by category and type of institution, respectively. These tables also include the concentrations and sites terminated or added as a result of program modifications as well as the new program added by USC Columbia with a program modification¹.

¹ As stated on page 5 of this report, the concentration in Mass Communications in the B.A.J.M.C. in Journalism was elevated to a stand-alone program, the B.A.J.M.C. in Mass Communications.

Table 7. Terminated and Approved Academic Degree Programs, Program Concentrations, Sites, and Certificates

Note: T=Terminated and A = Approved

Curricular Area	Degree Programs		Concentrations		Sites		Certificates		Total	
	T	A	T	A	T	A	T	A	T	A
Agriculture	1		1	1					2	1
Natural Resources/ Conservation								3	0	3
Area, Ethnic, Cultural, Gender, and Group Studies								1	0	1
Communication/ Journalism		1							0	1
Computer and Information Sciences	1					5		2	1	7
Personal and Culinary Services		1							0	1
Education	2	5	7	10	2	2		3	11	20
Engineering	5	3	16			15		1	21	19
Liberal Arts and Sciences		2				3			0	5
Biological and Biomedical Sciences				1					0	1
Mathematics	1	1	3						4	1
Military Science		1							0	1
Parks, Recreation, Leisure, and Fitness Studies		3							0	3
Physical Sciences				6					0	6
Psychology	2		1	1	1				4	1
Homeland Security, Law Enforcement, etc.								2	0	2
Public Administration				1					0	1
Social Sciences			2						2	0
Mechanic and Repair Technologies	1	2			1	4			2	6
Transportation and Materials Moving									0	0
Visual and Performing Arts				4	1			1	1	5
Health Professions and Related Programs	6	7		1		3	3		9	11
Business, Management, Marketing and Related Studies	1	1	3	17		3		5	4	26
History				2				1	0	3
Total	20	27	33	44	5	35	3	19	61	125

Table 8. Terminated and Approved Academic Degree Programs, Program Concentrations, Sites, and Certificates by Institution

Note: T=Terminated and A = Approved

Institution	Degree Programs		Concentrations		Sites		Certificates		Total		Net
	T	A	T	A	T	A	T	A	T	A	
Aiken									0	0	0
Central Carolina									0	0	0
Denmark									0	0	0
Florence-Darlington	3								3	0	-3
Greenville		1				2			0	3	3
Horry-Georgetown	2	2							2	2	0
Midlands									0	0	0
Northeastern									0	0	0
Orangeburg-Calhoun	1								1	0	-1
Piedmont		1							0	1	1
Spartanburg	3	1				6			3	7	4
Technical College of the Lowcountry	1								1	0	-1
Tri-County				1					0	1	1
Trident	1				1	1			2	1	-1
Williamsburg									0	0	0
York									0	0	0
USC Regional Campuses									0	0	0
Subtotal Two-years	11	5	0	1	1	9	0	0	12	15	3
The Citadel	1	1						13	1	14	13
Clemson		6	5	5		20		1	5	32	27
Coastal Carolina	2	4		3		1		2	2	10	8
College of Charleston		1						1	0	2	2
Francis Marion		1	1	2					1	3	2
Lander	2		3	3	2				7	3	-4
Medical Univ. of SC	4	4		1		1	3		7	6	-1
South Carolina State				4					0	4	4
USC Aiken		1							0	1	1
USC Beaufort		1							0	1	1
USC Columbia		3	19	16		3			19	22	3
USC Upstate			1						1	0	-1
Winthrop			4	9	2	1		2	6	12	6
Subtotal Four-years	9	22	33	43	4	26	3	19	49	110	61
Total	20	27	33	44	5	35	3	19	61	125	64

Table 9. Terminated and Approved Academic Degree Programs, Program Concentrations, Sites, and Certificates by Program Category

	Terminated	Approved	Net
Academic Degree Programs (Associate, Bachelor, Master, and Doctoral)	20	27	7
Concentrations	33	44	11
Sites	5	35	30
Certificates	3	19	16
Total	61	125	64

Table 10. Terminated and Approved Academic Degree Programs, Program Concentrations, Sites, and Certificates by Institution Type

	Terminated	Approved	Net
Technical Colleges	12	15	3
Regional Two-Year Campuses	0	0	0
Comprehensive Teaching Universities	18	50	32
Research Universities	31	60	29
Total	61	125	64

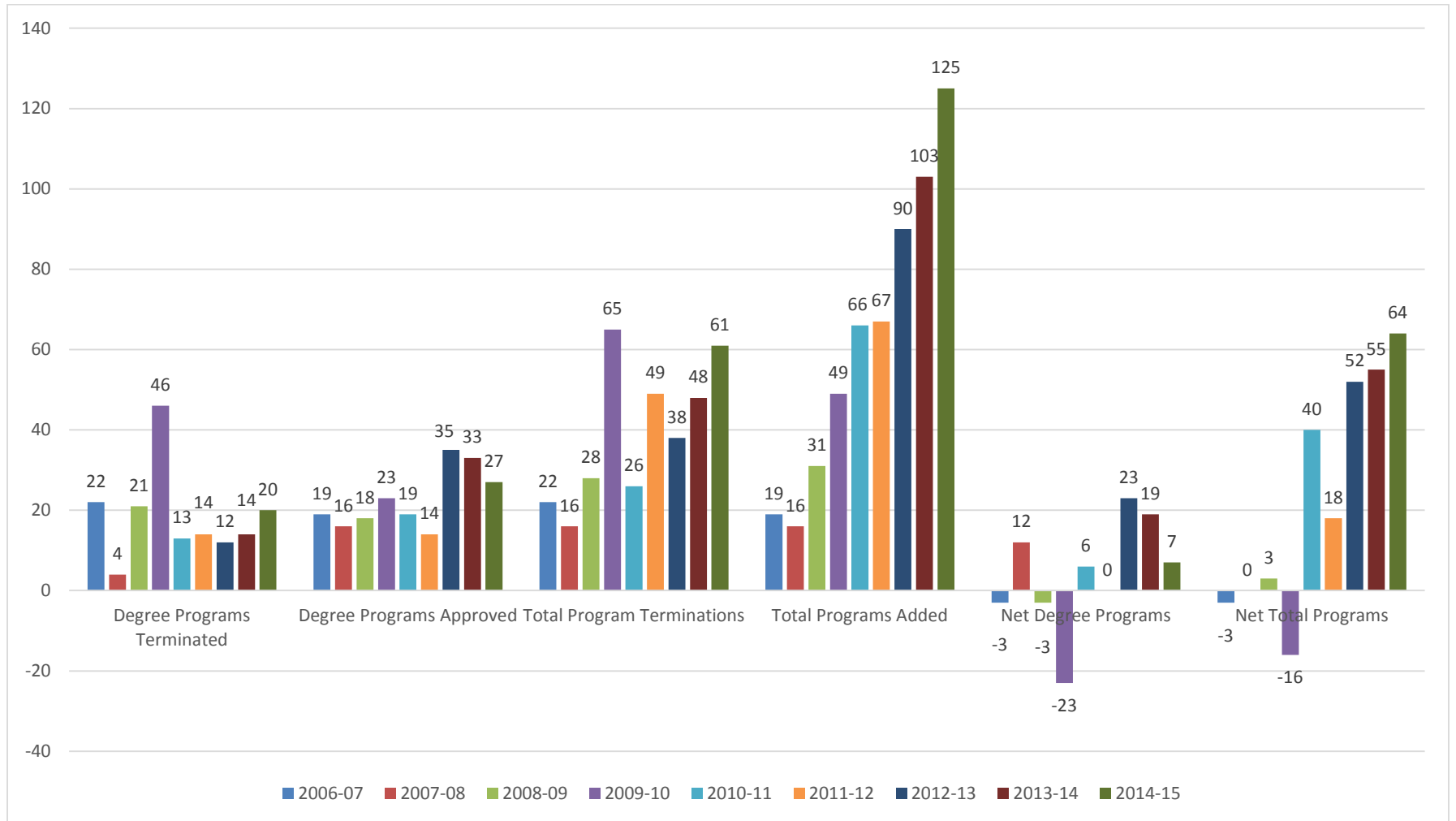
Comparison of Terminated and Approved Academic Degree Programs, Program Concentrations, Sites, and Certificates by Year

Both Table 11 and Figure 2 compare the number of academic degree programs terminated and approved and the total number of terminated and approved/added academic degree programs, program concentrations, sites, and certificates by year.

Table 11. Terminated and Approved Academic Degree Programs, Program Concentrations, Sites, and Certificates by Year

	Academic Degree Programs			Academic Degree Programs, Concentrations, Sites, and Certificates		
	Terminated	Approved	Net	Terminated	Added	Net
2014-15	20	27	7	61	125	64
2013-14	14	33	19	48	103	55
2012-13	12	35	23	38	90	52
2011-12	14	14	0	49	67	18
2010-11	13	19	6	26	66	40
2009-10	46	23	-23	65	49	-16
2008-09	21	18	-3	28	31	3
2007-08	4	16	12	16	16	0
2006-07	22	19	-3	22	19	-3
Total	166	204	38	353	566	213

Figure 2. Terminated and Approved Academic Degree Programs, Program Concentrations, Sites, and Certificates by Year



Conclusions

Data presented in this report show that, during the past three years, there has been an increase in the number of academic degree programs approved by the Commission. From 2006-2011, South Carolina's public colleges and universities added an average of 18 new academic degree programs per year; whereas, for the past three years, the institutions have added 35, 33, and 27 programs, respectively.

Overall, the institutions added a net total of 213 academic degree programs, program concentrations, sites, and certificates since 2006, with the majority of program additions in the following curricular areas:

- business/management
- education
- engineering and engineering technologies
- health professions and related programs.

The increase in programs in these curricular areas is a result of the workforce needs of the state. According to a recent report, *South Carolina's Education-Workforce Matchup: 2013-2030 Identifying the Higher Education Needs of the 21st Century*, "the five occupation groups requiring higher education that are projected to have the highest workforce shortages in 2030 are: (1) Healthcare Practitioners; (2) Management; (3) Education; (4) Business and Financial Operations; and (5) Computers and Mathematics."² This report claims that "together, these occupation groups will represent over 78 percent of the higher education workforce shortage in 2030."³ In addition, a report by New Carolina, a statewide, business-led organization focused on economic development, discusses South Carolina's changing economy as a result of the arrival of BMW's production facility in the Upstate in 1992 and Boeing's Dreamliner assembly plant in the Lowcountry in 2011. The report claims South Carolina is now "ranked as one of the highest states for foreign direct investment per capita in the nation."⁴ Engineering and engineering technologies programs are needed to support the innovative technology and knowledge-based companies choosing to locate in the state. Furthermore, an article posted by the Clemson University Center for Workforce Development states that "even during the depths of the recent economic recession in our region, industry demand for technicians with knowledge and skills in engineering technologies, industrial technologies, and computer technologies never waned."⁵

It is worth noting that the net total program additions shown in Table 11 reflects the more cost-effective practice of implementing certificate programs or program concentrations instead of (or prior to) implementing a new degree program. Only 38 of the 213 net total program additions (17.8%) since 2006 resulted from new academic degree programs. It is also worth noting that the largest increase in both academic degree and total program terminations occurred in FY 2009-10, most likely as a result of institutions reevaluating their programs during the economic recession.

² Woodward, Douglas P. and Joseph C. Von Nessen. *South Carolina's Education-Workforce Matchup: 2013-2030 Identifying the Higher Education Needs of the 21st Century*. Darla Moore School of Business at the University of South Carolina. November 2013.

http://www.competingthroughknowledge.org/assets/uploads/references/Higher_Education_Report.pdf

³ Ibid.

⁴ McKinney, Laura and George Fletcher. *New Carolina: Private Leadership in Economic Development*. New Carolina, Summer 2013. <http://www.newcarolina.org/UserFiles/publications/SC%20Case%20Study%20FINAL%2008-07-2013.pdf>

⁵ Craft, Elaine L. *The Myth of STEM Jobs*. Clemson University Center for Workforce Development. Clemson University 2014.. <http://www.clemson.edu/centers-institutes/cucwd/news/the-myth-of-stem-jobs/>