

# South Carolina Commission on Higher Education

Brig Gen John L. Finan, USAF (Ret.), Chair  
Dr. Bettie Rose Horne, Vice Chair  
Ms. Natasha M. Hanna  
Ms. Elizabeth Jackson  
Ms. Dianne C. Kuhl  
Ms. Leah B. Moody  
Vice Admiral Charles Munns, USN (ret.)  
Mr. Kim F. Phillips  
Ms. Terrye C. Seckinger  
Dr. Jennifer B. Settlemyer  
Mr. Hood Temple  
  
Dr. Richard C. Sutton  
Executive Director

CHE  
10/2/2014  
Agenda Item 6.02.G

October 2, 2014

## **MEMORANDUM**

**To:** Chairman John L. Finan and Members, S.C. Commission on Higher Education  
**From:** Dr. Bettie Rose Horne, Chair, and Members, Committee on Academic Affairs and Licensing

### **Report on Terminated and Approved Academic Programs and Program Modifications, July 2013 – June 2014 (For Information)**

#### **Background**

This report is presented to members of the Committee to provide an overview of program activity from July 1, 2013, through June 30, 2014. It includes academic degree programs terminated and approved; program modifications approved; changes to program concentrations; programs extended to or terminated from specific sites; and new and terminated certificates. Overall, there has been an increase in the number of programs approved by the Commission, especially during the past two years. This recent increase follows a period of increased program terminations that occurred during the economic recession (FY 2009-10). As such, the programs implemented by the institutions during the past two years have been done in response to the workforce needs of the state. As a result, the increase in the number of approved programs is both healthy for the state in terms of workforce development, and consistent with the institutions' desire to adapt to the state's changing economy.

#### **Termination and Approval of Academic Degree Programs**

In fiscal year 2013-14, nine colleges and universities (5 four-year and 4 two-year) terminated a total of 14 academic degree programs. During this time, 16 colleges and universities (13 four-year and 3 two-year institutions) received approval to offer a total of 33 new academic degree programs. The following tables show the academic degree programs terminated and approved.

**Table 1: Academic Degree Programs Terminated and Approved, Four-Year Institutions**

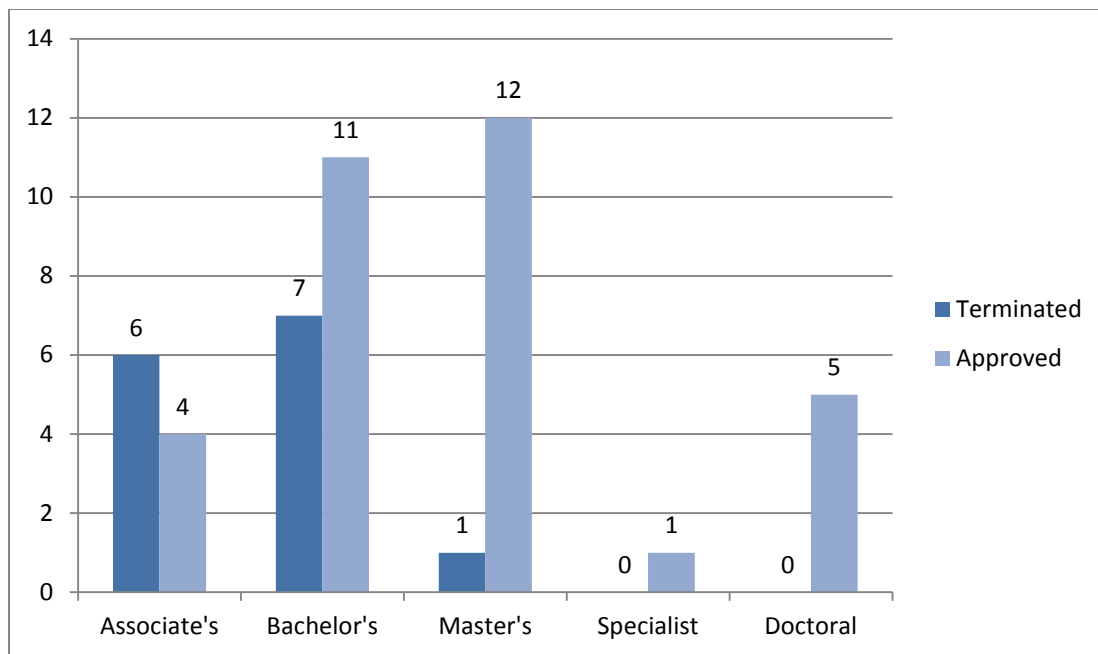
<b>Institution</b>	<b>Terminated</b>	<b>Approved</b>
The Citadel		M.S., Leadership B.S., Mechanical Engineering
Clemson University	M.Eng., Environmental Engineering B.A., Geology	B.S., Youth Development Studies M.E., Biomedical Engineering M.S., Applied Research and Evaluation Ph.D., Applied Research and Evaluation
Coastal Carolina University		B.S., Information Technology M.A., Liberal Studies Ed.S., Educational Leadership
College of Charleston		B.A./ A.B., African American Studies M.S., Child Life
Francis Marion University	B.A., International Studies	B.S., Industrial Engineering
Lander University		M.S., Athletic Training
Medical University of SC		M.S., Health Informatics M.S., Oral Sciences D.N.A.P., Post-Baccalaureate, Entry to Practice D.N.A.P., Post-Master's, Completion Ph.D., Biomedical Imaging
South Carolina State University		M.S., Bioengineering Science
USC Aiken		M.B.A.
USC Beaufort		B.S., Health Promotion
USC Columbia	B.S., Integrated Information Technology <sup>1</sup>	B.A., Chinese Studies M.E., Biomedical Engineering M.S., System Design Ph.D., Sport and Entertainment Management
USC Upstate	B.S.Ed., Secondary Education, English B.S.Ed., Secondary Education, Social Studies  B.A.Ed., Secondary Education, Mathematics	B.A., Child Development and Family Studies  B.A., Theatre B.S., Exercise and Sport Science with Tracks in Exercise Science, Medical Fitness, and Strength and Conditioning
Winthrop University	B.A., General Communication Disorders	B.A., Social Studies Education

<sup>1</sup> USC Columbia terminated the program offered under CIP Code 52.0204 (management and supervision) because the University received approval to offer a new program with the same name under CIP Code 11.0103 (information technology).

**Table 2: Academic Degree Programs Terminated and Approved, Technical Colleges**

Institution	Terminated	Approved
Denmark Technical College	A.A.S., Electronics Technology	
Greenville Technical College	A.A.S., Geomatics A.A.S., Biotechnology	
Florence-Darlington Technical College		A.A.S., Industrial Maintenance Technology
Horry-Georgetown Technical College		A.A.S., General Engineering Technology A.A.S., Sports Tourism
Piedmont Technical College	A.A.S., Vocational Technical Education A.A.S., Physical Therapist Assistant	
Tri-County Technical College	A.A.S., Machine Tool Technology	
Trident Technical College		A.A.S., Health Information Management

**Figure 1. Terminated and Approved Academic Degree Programs by Degree Level**



As shown in Figure 1, the majority of the academic degree program terminations occurred at the associate's and bachelor's degree levels, while the majority of new programs approved occurred at the bachelor's and master's degree levels.

**Table 3. Terminated and Approved Academic Degree Programs by Institution Type**

	<b>Terminated Programs</b>	<b>Approved Programs</b>	<b>Net</b>
<b>Technical Colleges</b>	6	4	<b>-2</b>
<b>Regional Two-Year Campuses</b>	0	0	<b>0</b>
<b>Comprehensive Teaching Institutions</b>	5	16	<b>11</b>
<b>Research Universities</b>	3	13	<b>10</b>
<b>Total</b>	<b>14</b>	<b>33</b>	<b>19</b>

### **Modifications of Academic Degree Programs**

The following program modifications were approved by Commission staff during FY 2013-14.

#### Clemson University

- The B.A. in Landscape Architecture program was modified from a five-year to a four-year degree program
- The M.S./Ph.D. in Bioengineering program added a new delivery site: Clemson University Biomedical Engineering Innovation Campus in Greenville, SC

#### Coastal Carolina University

- The B.A. in Special Education program was redesigned and the institution terminated the previous concentration so that the program leads to a B.A. in Special Education: Multi-Categorical
- The B.S. in Nursing, RN to BSN Completion program was extended to online delivery
- The M.Ed. in Learning and Teaching program added one concentration: Special Education High Incidence Disabilities Pre-K - Grade 12 [Emotional, Intellectual, and Learning (ED, ID &LD)]

#### Francis Marion University

- The B.S. in Nursing, RN to BSN Completion, program added a new delivery site in Mt. Pleasant, SC

#### Medical University of South Carolina

- The B.S. in Nursing, RN to BSN Completion, program was reactivated

#### South Carolina State University

- The B.A. in Music Education program added the following two concentrations: Choral/Piano and Choral/Voice
- The B.A. in Studio Art program added the following two concentrations: Painting/Drawing and Printmaking/Photography
- The B.S. in Chemistry program added the following four concentrations: Pre-Health Career, Graduate School /Industry, Radiochemistry, and Environmental Science
- The B.S. in Nutrition and Food Management program added the following two concentrations: Nutrition and Food Management
- The B.S. in Physics program added the following three concentrations: Astronomy, Health Physics, and Medical Physics

University of South Carolina Columbia

- The B.A. in Elementary Education program was extended to blended delivery (distance education and traditional on-campus delivery)

Winthrop University

The institution modified the core curriculum of the following programs:

- B.A., Modern Languages with concentration in 7-12 Teacher Certification in Spanish
- B.A., Modern Languages with concentration in 7-12 Teacher Cert. in French
- B.A., Mathematics with concentration in 7-12 Teacher Certification
- B.S., Mathematics with concentration in 7-12 Teacher Certification
- B.A., English with concentration in 7-12 Teacher Certification
- B.S., Biology with concentration in 7-12 Teacher Certification

University of South Carolina Union

- The institution received approval to offer more than 50% of the A.A. and A.S. programs at the new campus in Laurens, SC

**Program Concentrations**

The following table shows program concentrations terminated or added by the institutions during FY 2014-14.

**Table 4: Program Concentrations Terminated and Added**

<b>Institution</b>	<b>Terminated Concentrations</b>	<b>Added Concentrations</b>
Coastal Carolina University		<i>Organizational Leadership</i> to the B.S. in Business Administration, Management
College of Charleston	<i>Teacher Education</i> concentration from the following four programs B.A., A.B., Classics; B.A., A.B., French and Francophile Studies; B.A., A.B., German; and B.A., A.B., Spanish	<i>Computational Neuroscience</i> to the B.A., B.S., and A.B. in Physics <i>Cybersecurity</i> to the M.S. in Computer and Information Sciences (joint program with The Citadel)
Francis Marion University		two concentrations: <i>Civil Engineering Technology</i> and <i>Electronic Engineering Technology</i> to the B.S. in Engineering Technology
Lander University		two concentrations: <i>Keyboard</i> and <i>Instrumental</i> to the B.S. in Music two concentrations: <i>Software Development</i> and <i>Networking</i> to the B.S. in Computer Information Systems
USC Beaufort		<i>Biomedical Sciences</i> to the B.S. in Biology
USC Columbia	<i>Organization, Leadership, and Change</i> concentration from the Certificate in Higher Education Leadership	<i>Violin Pedagogy</i> to the Master of Music

<b>Institution</b>	<b>Terminated Concentrations</b>	<b>Added Concentrations</b>
USC Upstate	Two concentrations: <i>Pure Mathematics</i> and <i>Computational &amp; Applied Mathematics</i> from the B.S., Mathematics (the two were combined into a single concentration of <i>Mathematics</i> )	<i>Statistics</i> and <i>Mathematics</i> to the B.S. in Mathematics
Piedmont Technical College	<i>Internet</i> concentration from the A.A.S. in Computer Technology	
Technical College of the Lowcountry		two concentrations: <i>Bio Medical Equipment Repair</i> and <i>Avionics</i> to the A.A.S. in Industrial Electronics Technology

### Programs Terminated from and Extended to Specific Sites

The programs terminated from or extended to specific sites by institutions during FY 2103-14 are listed below.

**Table 5: Programs Terminated from and Extended to Specific Sites**

<b>Institution</b>	<b>Programs Terminated from Specific Sites</b>	<b>Programs Extended to Specific Sites</b>
Clemson University		Ph.D., Rhetorics, Communication and Information Design added online delivery
Coastal Carolina University		M.Ed., Learning and Teaching added online delivery for the Instructional Technology concentration B.S., Business Administration, Marketing added online delivery B.S., Business Administration, Resort Tourism Management added online delivery
College of Charleston	Certificate, English to Speakers of Other Languages I, II terminated from the main campus (program delivery changed from main campus to blended delivery)	Certificate, English to Speakers of Other Languages I, II added blended delivery Post-Baccalaureate Certificate, Urban and Regional Planning added two sites: College of Charleston North Campus and Lowcountry Graduate Center M.Ed., Teaching, Learning and Advocacy added Berkeley County School District as site
Francis Marion University	M.Ed., Instructional Accommodation, terminated the following sites: Kingsbury Elementary School, Lugoff-Elgin Middle School, Central High School, Andrew Jackson High School, Lee Central High School, Creek Bridge High School, and Marion County Technical Education Center	M.Ed., Instructional Accommodation added online delivery

<b>Institution</b>	<b>Programs Terminated from Specific Sites</b>	<b>Programs Extended to Specific Sites</b>
	M.Ed., Learning Disabilities, terminated the following sites: Kingsbury Elementary School, Lugoff-Elgin Middle School, Central High School, Andrew Jackson High School, and Lee Central High School	M.Ed., Learning Disabilities added online delivery
Medical University of SC	M.S., Clinical Research-Global, terminated four international locations: Hyderabad, India; Dehradun, India; Singapore; and Milton Keynes, United Kingdom	
USC Beaufort		B.S., Human Services added online delivery (for degree completion through Palmetto College) B.S., Nursing, R.N. to B.S.N. Completion added blended delivery
USC Columbia		Professional M.B.A. added a viewing site in Charlotte, NC M.P.H., Health, Promotion, Education, and Behavior added online delivery
USC Upstate		B.S., Business Administration offered the Nonprofit Administration concentration and minor at the University Center of Greenville
Winthrop University		M.Ed., Education Leadership added Fairfield County School District Administration Building in Winnsboro, SC as site
York Technical College		Associate of Arts added a new location: Indian Land Center

### **Certificate Programs**

The certificate programs terminated or added by institutions during FY 2013-14 are listed below.

**Table 6: Certificate Programs Terminated and Added**

<b>Institution</b>	<b>Certificate Programs Terminated</b>	<b>Certificate Programs Added</b>
Clemson University	Post-baccalaureate Certificate, Construction Science and Management Certificate, Writing Assessment	Certificate, Non-Profit Leadership Certificate, RGB Technical Certificate for Digital Arts (three stackable six credit-hour certificates: Red Technical Certificate in Digital Arts, Green Technical Certificate in Digital Arts, and Blue Technical Certificate for Digital Arts) Certificate, Structural Design of Low-Rise Structures Post-baccalaureate Certificate, Applied Behavior Analysis Post-baccalaureate Certificate, Camp Leadership

Institution	Certificate Programs Terminated	Certificate Programs Added
Coastal Carolina University		Post-baccalaureate Certificate, English for Speakers of Other Languages
		Post-baccalaureate Certificate, Online Teaching and Training
Medical University of SC		Graduate Certificate, Clinical Pharmacy Practice
USC Beaufort	Certificate, Accounting Foundations	
	Certificate, Gerontological Nursing	
	Certificate, Human Resources	
	Certificate, Management Foundations	
	Certificate, Small Business Management Foundations	
USC Columbia		Post-baccalaureate Certificate, Business Analytics
		Post-baccalaureate Certificate, Children's Law
		Post-baccalaureate Certificate, Financial and Resource Management
		Post-baccalaureate Certificate, Human Resources
		Post-baccalaureate Certificate, Qualitative Research
USC Upstate		Post-Baccalaureate Certificate, Child Advocacy Studies
Winthrop University	Certificate, Human Nutrition	Certificate, Healthcare Management
		Post-baccalaureate Certificate, Counseling and Development, School Counseling
		Post-baccalaureate Certificate, Management

### Comparison of Terminated and Approved Academic Degree Programs and Program Concentrations, Sites, and Certificates

The previous tables show that academic degree programs, program concentrations, sites, and certificate programs terminated and approved encompass several different fields. Table 7 compares the number of academic degree programs, program concentrations, and sites terminated with the number of those approved and added by curricular area. Table 8 compares the number of academic degree programs, program concentrations, sites, and certificate programs terminated with the number of those approved and added by institution while Tables 9 and 10 compare the same information by category and type of institution, respectively. These tables also include the concentrations and sites terminated or added as a result of program modifications.



**Table 7. Terminated and Approved Academic Degree Programs, Program Concentrations, Sites, and Certificates**

Curricular Area	Degree Programs		Concentrations		Sites		Certificates		Total	
	T	A	T	A	T	A	T	A	T	A
Area, Ethnic, Cultural, or Gender Studies		2							0	2
Biological and Biomedical Sciences	1			1					1	1
Business/Management		3	1	1		4	3	5	4	13
Communication	1					1			1	1
Computer and Information Sciences	1	1	1	3				1	2	5
Construction Trades							1		1	0
Education	3	2	5	4	13	8	1	4	22	18
Engineering and Engineering Technologies	3	8		4		1		1	3	14
Family and Consumer Sciences / Human Services		3		2		1	2		2	6
Health Professions and Related Programs	1	10			4	4	1	2	6	16
International Studies	1								1	0
Liberal Arts and Sciences / General Studies		1				2			0	3
Mathematics			2	2					2	1
Parks, Recreation, Leisure and Fitness Studies		2						1	0	3
Public Administration								2	0	2
Physical Sciences	1			8					1	8
Social Sciences						2		1	0	3
Visual and Performing Arts		1		5					0	6
Vocational Education	2								2	0
<b>Total</b>	<b>14</b>	<b>33</b>	<b>9</b>	<b>30</b>	<b>17</b>	<b>23</b>	<b>8</b>	<b>17</b>	<b>48</b>	<b>103</b>

\*Note: T=Terminated and A = Added

**Table 8. Terminated and Approved Academic Degree Programs, Program Concentrations, Sites, and Certificates by Institution**

Institution	Degree Programs		Concentrations		Sites		Certificates		Total		Net
	T*	A*	T	A	T	A	T	A	T	A	
Aiken									0	0	0
Central Carolina									0	0	0
Denmark	1								1	0	-1
Florence-Darlington		1							0	1	1
Greenville	2								2	0	-2
Horry-Georgetown		2							0	2	2
Midlands									0	0	0
Northeastern									0	0	0
Orangeburg-Calhoun									0	0	0
Piedmont	2		1						3	0	-3
Spartanburg									0	0	0
Technical College of the Lowcountry				2					0	2	2
Tri-County	1								1	0	-1
Trident		1							0	1	1
Williamsburg									0	0	0
York						1			0	1	1
USC Regional Campuses						1			0	1	1
Subtotal Two-years	6	4	1	2	0	2	0	0	7	8	1
The Citadel		2							0	2	2
Clemson	2	4				2	2	5	4	11	7
Coastal Carolina		3	1	3		4		2	1	12	11
College of Charleston		2	4	2	1	4			5	8	3
Francis Marion	1	1		2	12	3			13	6	-7
Lander		1		4					0	5	5
Medical University of SC		5			4			1	4	6	2
South Carolina State		1		13					0	14	14
USC Aiken		1							0	1	1
USC Beaufort		1		1		2	5		5	4	-1
USC Columbia	1	4	1	1		4		5	2	14	12
USC Upstate	3	3	2	2		1		1	5	7	2
Winthrop	1	1				1	1	3	2	5	3
Subtotal Four-years	8	29	8	28	17	21	8	17	41	95	54
<b>Total</b>	<b>14</b>	<b>33</b>	<b>9</b>	<b>30</b>	<b>17</b>	<b>23</b>	<b>8</b>	<b>17</b>	<b>48</b>	<b>103</b>	<b>55</b>

\*Note: T=Terminated and A = Approved

**Table 9. Terminated and Approved Academic Degree Programs, Program Concentrations, Sites, and Certificates by Program Category**

	<b>Terminated</b>	<b>Approved</b>	<b>Net</b>
<b>Academic Degree Programs (Associate, Bachelor, Master, and Doctoral)</b>	14	33	<b>19</b>
<b>Concentrations</b>	9	30	<b>21</b>
<b>Sites</b>	17	23	<b>6</b>
<b>Certificates</b>	8	17	<b>9</b>
<b>Total</b>	<b>48</b>	<b>103</b>	<b>55</b>

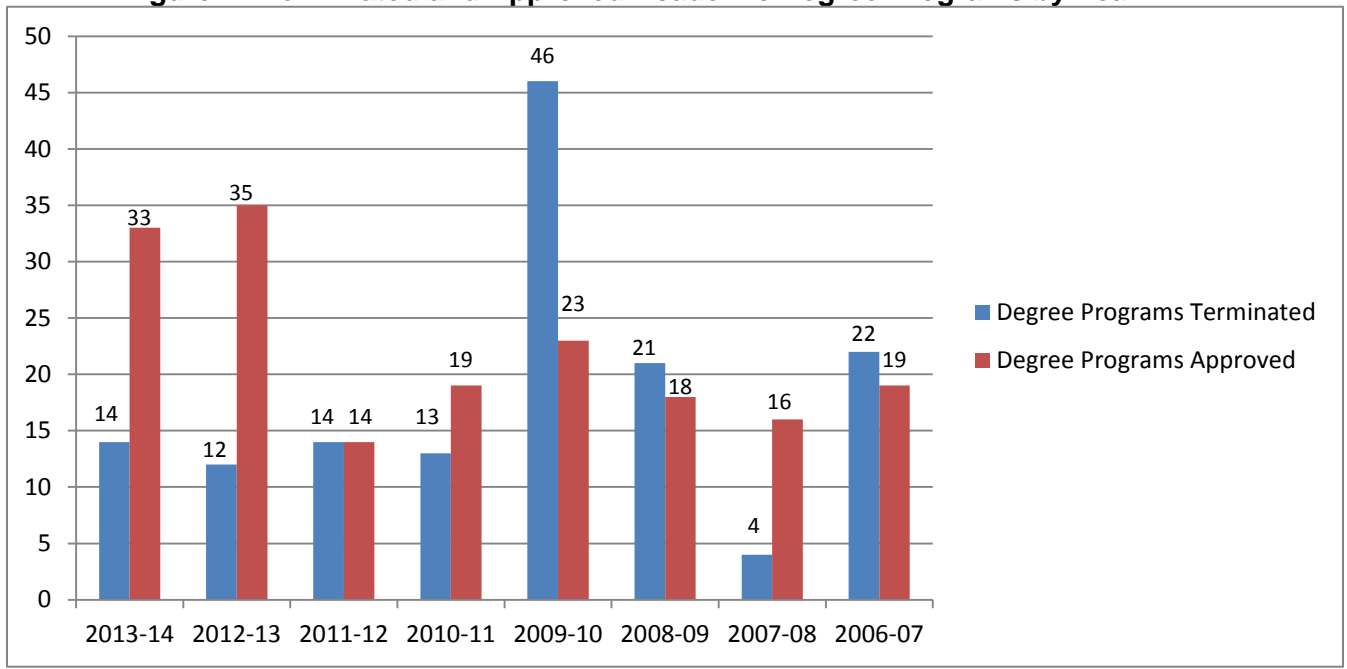
**Table 10. Terminated and Approved Academic Degree Programs, Program Concentrations, Sites, and Certificates by Institution Type**

	<b>Terminated</b>	<b>Approved</b>	<b>Net</b>
<b>Technical Colleges</b>	7	7	0
<b>Regional Two-Year Campuses</b>	0	1	1
<b>Comprehensive Teaching Universities</b>	31	64	33
<b>Research Universities</b>	10	31	21
<b>Total</b>	<b>48</b>	<b>103</b>	<b>55</b>

**Comparison of Terminated and Approved Academic Degree Programs, Program Concentrations, Sites, and Certificates by Year**

Figure 2 compares the number of academic degree programs terminated and approved by year. Table 11 compares both the number of academic degree programs terminated and approved and the total number of terminated and approved academic degree programs, program concentrations, sites, and certificates by year. Figure 3 compares the total number of terminated and approved academic degree programs, program concentrations, sites, and certificates.

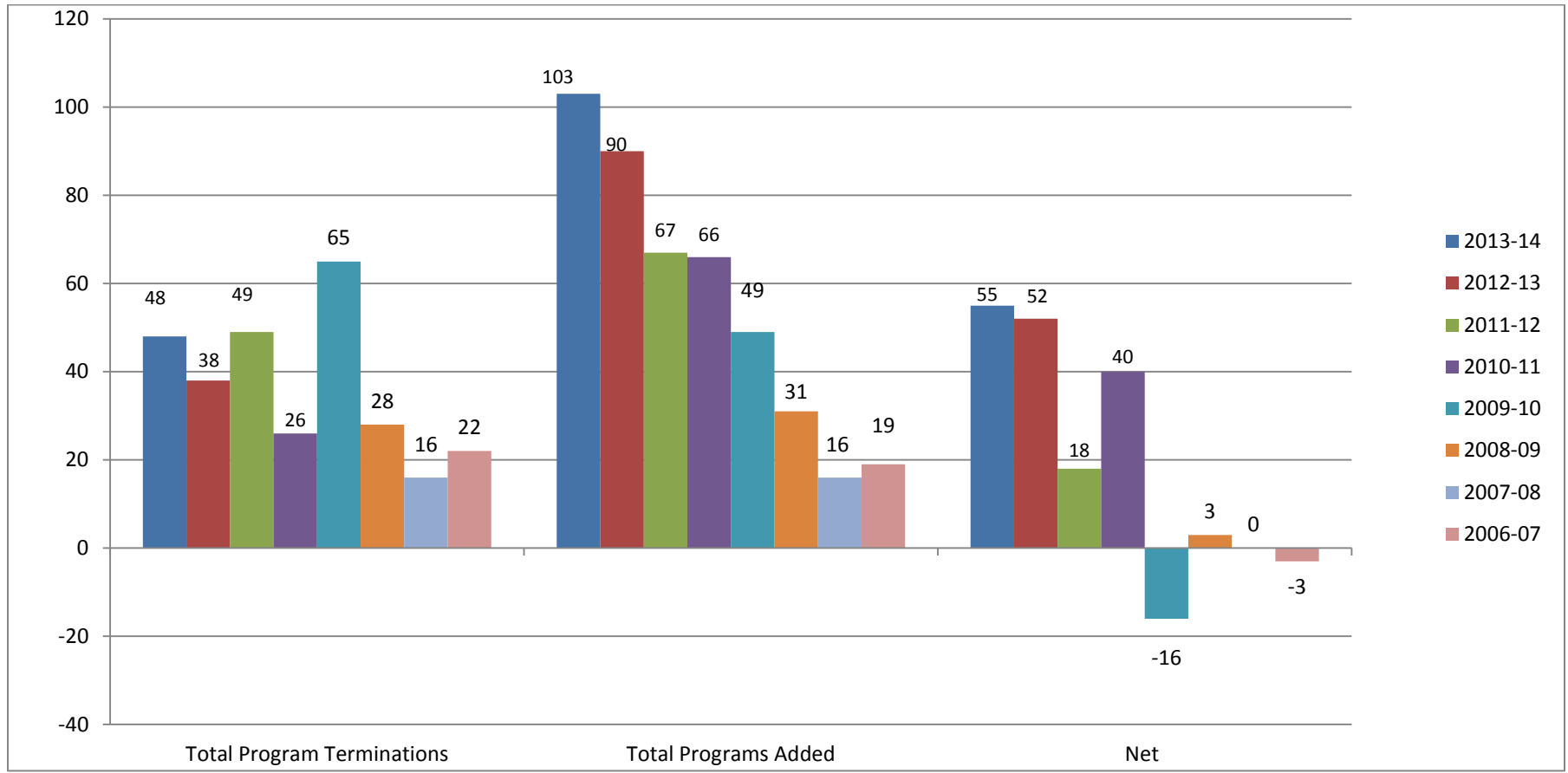
**Figure 2. Terminated and Approved Academic Degree Programs by Year**



**Table 11. Terminated and Approved Academic Degree Programs, Program Concentrations, Sites, and Certificates by Year**

	Academic Degree Programs			Academic Degree Programs, Concentrations, Sites, and Certificates		
	Terminated	Approved	Net	Terminated	Added	Net
2013-14	14	33	19	48	103	55
2012-13	12	35	23	38	90	52
2011-12	14	14	0	49	67	18
2010-11	13	19	6	26	66	40
2009-10	46	23	-23	65	49	-16
2008-09	21	18	-3	28	31	3
2007-08	4	16	12	16	16	0
2006-07	22	19	-3	22	19	-3
<b>Total</b>	<b>146</b>	<b>177</b>	<b>31</b>	<b>292</b>	<b>441</b>	<b>149</b>

**Figure 3. Terminated and Approved Academic Degree Programs, Program Concentrations, Sites, and Certificates by Year**



## Conclusions

Data gathered and presented for the tables and figures included in this report show that, during the past two years, there has been an increase in the number of academic degree programs approved by the Commission. From 2006-2011, South Carolina's public colleges and universities added an average of 18 new academic degree programs per year; whereas, for the past two years, the institutions have added 35 and 33 programs, respectively.

Overall, the institutions have added a net total of 149 academic degree programs, program concentrations, sites, and certificates since 2006, with the majority of program additions in the following curricular areas:

- business/management
- education
- engineering and engineering technologies
- health professions and related programs.

The increase in business/management and engineering and engineering technologies programs is a result of the workforce needs of the state. According to a recent report by New Carolina, a statewide, business-led organization that focused on economic development, business was ranked first in Employment by Traded Cluster in South Carolina in 2010.<sup>2</sup> That same report discussed South Carolina's changing economy as a result of the arrival of BMW's production facility in the upstate in 1992 and Boeing's recent decision to locate its Dreamliner assembly plant in the Lowcountry and claimed that South Carolina is now "ranked as one of the highest states for foreign direct investment per capita in the nation."<sup>3</sup> Engineering and engineering technologies programs are needed to support these innovative technology and knowledge-based companies choosing to locate in the state. Additionally, an article posted by the Clemson University Center for Workforce Development states that "even during the depths of the recent economic recession in our region, industry demand for technicians with knowledge and skills in engineering technologies, industrial technologies, and computer technologies never waned."<sup>4</sup>

The increase in education programs follows national trends for educator preparation, as these programs tend to change more frequently than programs in other disciplines to accommodate ongoing modifications in curricular standards and best practices. The increase in health professions and related programs is in line with employment projections from the Bureau of Labor Statistics for 2012-22 which predict that occupations and industries related to healthcare will add the most new jobs during this time frame.<sup>5</sup> The increase is also a result of the state's healthcare needs since several areas in the state are considered medically underserved.<sup>6</sup>

---

<sup>2</sup> McKinney, Laura and George Fletcher. *New Carolina: Private Leadership in Economic Development*. New Carolina, Summer 2013. <http://www.newcarolina.org/UserFiles/publications/SC%20Case%20Study%20FINAL%2008-07-2013.pdf>

<sup>3</sup> Ibid.

<sup>4</sup> Craft, Elaine L. *The Myth of STEM Jobs*. Clemson University Center for Workforce Development. Clemson University 2014. web. 16 July 2014. <http://www.clemson.edu/centers-institutes/cucwd/news/the-myth-of-stem-jobs/>

<sup>5</sup> *Employment Projections: 2012-22*. U.S. Bureau of Labor Statistics. December 19, 2013. web. 16 July 2014. <http://www.bls.gov/news.release/ecopro.toc.htm>

<sup>6</sup> *Leveraging Graduate Medical Education to Increase Primary Care and Rural Physician Capacity in South Carolina*. January 2014. web. 16 July 2014. (Report by the South Carolina GME Advisory Group in response to 2013-2014 Appropriations-Bill 3710 Part IB, Proviso 33.34 (E)). <https://www.scdhhs.gov/sites/default/files/GME%20Advisory%20Group%20Report%20%20January%202014%20final.pdf> and *South Carolina Health Professions Data Book*. Office of Healthcare Workforce Analysis and Planning. 2012. web. 16 July 2014. [http://officeforhealthcareworkforce.org/bigDocs/ohw\\_cdb2012.pdf](http://officeforhealthcareworkforce.org/bigDocs/ohw_cdb2012.pdf)

It is worth noting that the net total program additions reflects the more cost-effective practice of implementing certificate programs or program concentrations instead of (or prior to) implementing a new degree program. Only 31 of the 149 net total program additions resulted from new academic degree programs. It is also worth noting that the largest increase in both academic degree and total program terminations occurred in FY 2009-10, most likely as a result of institutions reevaluating their programs during the economic recession.